



AMSOIL

\$1.00 U.S.

The First in Synthetics

Factory Direct Catalog

Synthetic Motor Oils • Synthetic Drivetrain Lubes
Oil & Air Filters • Appearance Products
Fuel Additives • Wiper Blades
Spark Plugs & Wires

NEW!

AMSOIL
Severe Gear
SAE 100

AMSOIL
Severe Gear

SAE 250

NEW!

AMSOIL
Brake Fluid

AMSOIL
Brake Fluid

TO ORDER - Call 1-800-956-5695 7 a.m. to 5 p.m. Central Time, M - F

The First in Synthetics®



During Lieutenant Colonel Al Amatuzio's 25 years as an award-winning jet fighter pilot, he gained a solid appreciation for the extraordinary lubricants that protected the engines of the jets he flew. He knew that *only* these lubricants, synthetic lubricants, could stand up to the demanding operating conditions of jet engines and the severe temperature extremes they encounter.

He knew also that the same outstanding performance benefits synthetic lubricants provide for jet engines would prove invaluable to car, truck and other internal combustion engines.

Amatuzio began an intense period of research in 1963. He assembled the industry's most knowledgeable chemists, and by 1966 his newly formulated synthetic motor oil was being sold commercially. Throughout the 1960s Amatuzio continued his research and developed commercially available synthetic oils under a variety of names. In 1972, AMSOIL

became the first synthetic motor oil in the world to meet American Petroleum Institute service requirements.

The introduction of AMSOIL synthetic motor oil in 1972 set all-new standards for motor oil quality. AMSOIL synthetic motor oil outperformed conventional petroleum motor oils on all counts. It was clear from the start that this innovative product would play a major role in engine performance and engine life.

Today, virtually every other motor oil manufacturer has recognized the superiority of synthetic lubricants and has followed the AMSOIL lead with introductions of synthetic motor oils of their own. They spend millions of dollars advertising their "new" and "revolutionary" products. No one, however, can match AMSOIL experience and technological know-how. And no one delivers products like AMSOIL. Accept no substitutes — AMSOIL is "The First in Synthetics."®

Know the Facts - **AMSOIL Saves You Money!**

AMSOIL extended drain intervals mean fewer oil changes, long term savings and convenience

EXAMPLE:

Conventional motor oil companies recommend 3,000-mile drain intervals

Conventional 5W-30 Motor Oil

* (40 quarts needed for
25,000 miles)

@ 2.50/qt. x 40 = \$100.00

8 Standard Oil Filters

@ 6.00 per filter x 8 = \$48.00

TOTAL **\$148.00**

AMSOIL recommends 25,000-mile/1-year drain intervals

AMSOIL 5W-30 Synthetic Motor Oil

* (5 quarts needed for
25,000 miles)

@ 7.70/qt. x 5 = \$38.50

1 AMSOIL Ea Oil Filter

\$15.30

TOTAL **\$53.80**

* Comparison based on 25,000 miles driven per year and 5-quart oil capacity.

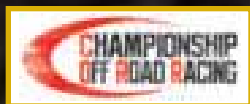
You save **\$94.20 per year** using AMSOIL premium quality synthetic motor oil and oil filters.

Even if you drive only 12,000 miles per year, the cost for AMSOIL motor oil is less than you pay for petroleum oil now! And you still get better wear protection, lower engine temperatures, improved fuel efficiency and easier cold-weather starts. All of these benefits add up to reduced operating costs and longer engine life. Change your oil and filter today and in 12 months change the oil and filter again. That's it! What could be more convenient and good for your vehicle, too?

See the AMSOIL Product Information and Drain Interval Chart (G2281, \$0.35) for more information.

Products the Pros Use

AMSOIL Off-Road Racing



Team AMSOIL off-road racing stars **Mike Oberg** and **Scott Douglas** are top contenders on the Championship Off Road

Racing (CORR) series this summer. Oberg and Douglas combined for 22 podium finishes and eight wins in 2007. AMSOIL is the Exclusive Official Oil of CORR in 2008. CORR represents the best drivers and competition in short-course off-road racing. The series will broadcast live on both NBC and the SPEED Channel throughout the season. Follow the AMSOIL/Kumho Tire Super Team and all of the CORR racing action at www.amsoil.com.



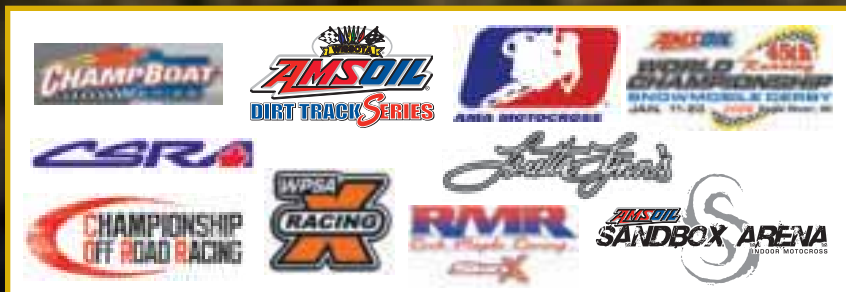
Scott Douglas



Mike Oberg

| CORR Race Date | NBC Air Date and Time (All times Eastern) | |
|------------------------------|---|----------------|
| Los Angeles, April 26-27 | May 25 | 1:30 p.m. |
| Las Vegas, May 17-18 | June 15 | 12:30 p.m. |
| Los Angeles, June 7-8 | July 6 | 3 p.m. |
| Chula Vista, July 26-27 | July 27 | 3 p.m. LIVE |
| Los Angeles, August 16-17 | September 14 | 1:30 p.m. |
| Chula Vista, September 13-14 | October 5 | 2:30 p.m. |
| Las Vegas, October 25-26 | October 26 | 2:30 p.m. LIVE |
| Chula Vista, December 6-7 | December 6 | 4:30 p.m. LIVE |

*The SPEED Channel schedule will be posted at www.amsoil.com as soon as it becomes available.



Official Oil

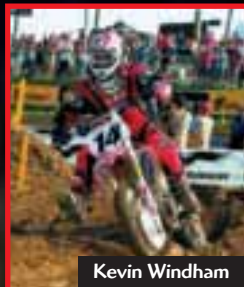
TO ORDER – Call 1-800-956-5695 7 a.m. to 5 p.m. Central Time, M - F

AMSOIL Supercross/Motocross

Team AMSOIL supercross/motocross stars **Kevin Windham** and **Josh Grant** will be racing in pursuit of an AMA motocross title this summer. Look for Windham, Grant and their Team AMSOIL teammates all season on the AMA motocross circuit. See www.amsoil.com for the latest racing broadcast schedule.



AMSOIL is the Exclusive Official Oil of the AMA Outdoor Nationals.



Kevin Windham



Josh Grant

AMSOIL ChampBoat Series

Team AMSOIL powerboat racing star and three-time ChampBoat Series champion **Terry Rinker** is back in action this summer. Look for Rinker all season on the action-packed ChampBoat Series racing circuit. See www.amsoil.com for the latest racing broadcast schedule.



AMSOIL is the Exclusive Official Oil of the ChampBoat Series.



Terry Rinker

AMSOIL Snocross

Team AMSOIL snocross stars **D.J. Eckstrom** and **Shaun Crapo** will be top contenders for a WPSA snocross championship next winter. Look for Eckstrom and Crapo all season on the exciting WPSA snocross racing circuit as they race for a title. See www.amsoil.com for the latest racing broadcast schedule.



AMSOIL is the Exclusive Official Oil of the WPSA.



Shaun Crapo



D.J. Eckstrom



Series 2000 Synthetic 20W-50 Racing Oil

The number one choice for racers of all types of vehicles. Special synthetic base stocks and advanced additive package provide over twice the wear protection of other motor oils. Reduces friction for quicker engine response and increased horsepower.

SERIES 2000 SAE 20W-50 SYNTHETIC RACING OIL API Service SM/CF, SL, SJ, SH . . .

| Stock# | Unit of Measure | Pkg./Size | Wt.Lbs. | Cost |
|--------|-----------------|-------------|---------|--------|
| TROQT | EA | (1) Quart | 2.1 | 10.00 |
| TROQT | CA | (12) Quarts | 25.3 | 118.80 |
| TRO1G | EA | (1) Gallon | 8.1 | 37.55 |
| TRO1G | CA | (4) Gallons | 32.4 | 148.60 |



SAE 60 Synthetic Super Heavy Weight Racing Oil

High viscosity oil designed for high horsepower racing engines. Resists thinning effects of fuel dilution and provides unsurpassed wear protection, friction reduction and more power. Highly resistant to thermal degradation and oxidation. Also great for older model Harley-Davidson motorcycles.

SAE 60 SYNTHETIC SUPER HEAVY WEIGHT RACING OIL

API SL/CF, JASO MA • ISO-L-EMA

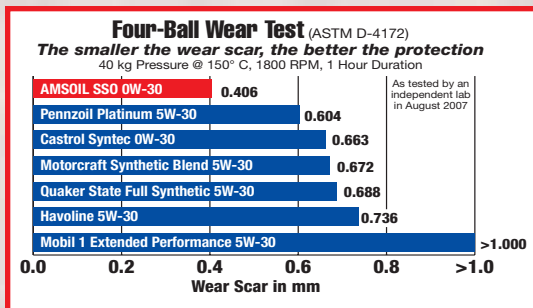
| Stock# | Unit of Measure | Pkg./Size | Wt.Lbs. | Cost |
|--------|-----------------|----------------|---------|--------|
| AHRQT | EA | (1) Quart | 2.1 | 10.15 |
| AHRQT | CA | (12) Quarts | 25.0 | 120.60 |
| AHRTP | EA | (1) 2.5 Gallon | 19.9 | 89.20 |
| AHRTP | CA | (2) 2.5 Gallon | 39.7 | 176.40 |

Signature Series 0W-30 Synthetic Motor Oil

Engineered with the world's finest synthetic base oils and high performance additives, this exclusive extended drain formulation delivers superior engine protection and unsurpassed fuel economy in gasoline and diesel engines. Exceeds the requirements for modern, high-performance engines and older engines. Replaces and outperforms conventional and synthetic 0W-30, 5W-30 and 10W-30 motor oils.

SIGNATURE SERIES SAE 0W-30 SYNTHETIC MOTOR OIL
API Service SM/CF, SL, SJ . . . • ILSAC GF-4, 3 . . .

| Stock# | Unit of Measure | Pkg/Size | Wt. Lbs. | Cost |
|--------|-----------------|-------------|----------|--------|
| SSOQT | EA | (1) Quart | 2.1 | 10.10 |
| SSOQT | CA | (12) Quarts | 24.6 | 120.00 |
| SSO1G | EA | (1) Gallon | 7.9 | 37.10 |
| SSO1G | CA | (4) Gallons | 31.7 | 146.80 |



Series 3000 Synthetic 5W-30 Heavy Duty Diesel Oil

Engineered for pre-2007 on-road diesel engines and all model year off-road diesel engines. Also for all gasoline engines recommending API SL specifications including turbo-charged vehicles. Contains the beefiest additive package of all AMSOIL motor oils. Delivers better wear protection than other popular diesel oils and effectively reduces fuel consumption. Series 3000 is ideal for EGR engines. It resists soot thickening and breakdown from heat, blow-by and acids. For 2007 and newer on-road diesel vehicles, see Synthetic 5W-40 Premium Diesel Oil on pg. 11.



SERIES 3000 SAE 5W-30 SYNTHETIC HEAVY DUTY DIESEL OIL
API CI-4+/CF/CF-2/SL • Global DHD-1 • ACEA A3/B3, E3, E5 • JASO DH-1 • Mack • Detroit Diesel

• Caterpillar • Cummins • Volvo • Daimler-Benz

| Stock# | Unit of Measure | Pkg/Size | Wt. Lbs. | Cost |
|--------|-----------------|-----------------|----------|--------|
| HDDQT | EA | (1) Quart | 2.1 | 10.10 |
| HDDQT | CA | (12) Quarts | 24.8 | 120.00 |
| HDD1G | EA | (1) Gallon | 8.0 | 36.85 |
| HDD1G | CA | (4) Gallons | 32.0 | 145.80 |
| HDDTP | EA | (1) 2.5 Gallon | 19.6 | 86.80 |
| HDDTP | CA | (2) 2.5 Gallons | 39.2 | 171.20 |



AMSOIL Top Sellers



Synthetic Motor Oil

Dramatically outperforms conventional petroleum motor oils. Reduces friction, heat and wear for maximum power, performance and fuel efficiency. Resists high-temperature burn-off, chemical breakdown and sludging—keeps engines cleaner. Outstanding low-temperature fluidity for fast, dependable winter starts and immediate start-up protection. Exceeds the most demanding world-wide performance standards and meets warranty requirements for all domestic and imported passenger car engines, both turbocharged and nonturbocharged. Up to 25,000-mile or 1-year drain intervals.

See the AMSOIL Product Information and Drain Interval Chart (G2281, \$0.35) for more information.

SAE 0W-20 SYNTHETIC MOTOR OIL

Recommended for applications requiring 5W-20 and 0W-20.

API Service SM/CF, SL, SJ...

• ILSAC GF-4, 3...

| Stock# | Unit of Measure | Pkg./Size | Wt. Lbs. | Cost |
|--------|-----------------|-------------|----------|--------|
| ASMQT | EA | (1) Quart | 2.0 | 8.05 |
| ASMQT | CA | (12) Quarts | 24.5 | 95.40 |
| ASM1G | EA | (1) Gallon | 7.6 | 30.80 |
| ASM1G | CA | (4) Gallons | 31.6 | 121.60 |

SAE 5W-30 SYNTHETIC MOTOR OIL

API Service SM/CF, SL, SJ...

• ILSAC GF-4, 3...

| Stock# | Unit of Measure | Pkg./Size | Wt. Lbs. | Cost |
|--------|-----------------|-------------|----------|--------|
| ASLQT | EA | (1) Quart | 2.0 | 7.70 |
| ASLQT | CA | (12) Quarts | 24.5 | 91.20 |
| ASL1G | EA | (1) Gallon | 7.6 | 29.45 |
| ASL1G | CA | (4) Gallons | 31.6 | 116.20 |

SAE 10W-30 SYNTHETIC MOTOR OIL

API Service SM/CF, SL, SJ...

• ILSAC GF-4, 3...

| Stock# | Unit of Measure | Pkg./Size | Wt. Lbs. | Cost |
|--------|-----------------|-----------------|----------|--------|
| ATMQT | EA | (1) Quart | 2.1 | 7.70 |
| ATMQT | CA | (12) Quarts | 24.7 | 91.20 |
| ATM1G | EA | (1) Gallon | 7.9 | 29.45 |
| ATM1G | CA | (4) Gallons | 31.7 | 116.20 |
| ATMTP | EA | (1) 2.5 Gallon | 19.5 | 71.00 |
| ATMTP | CA | (2) 2.5 Gallons | 39.0 | 140.00 |

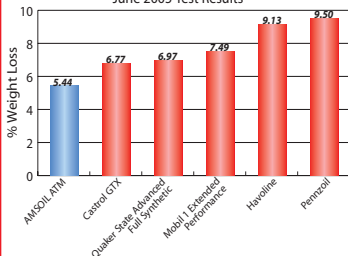
• For maximum engine protection, use an AMSOIL Ea Oil Filter and an AMSOIL Ea Air Filter (See pages 30-31).

NOTE: Most quick lube service centers will install the AMSOIL products you supply upon request or install them yourself.

Noack Volatility SAE 10W-30

ASTM D-5800

June 2005 Test Results



AMSOIL Synthetic Motor Oil doesn't volatilize (burn off) like other motor oils. The low volatility of AMSOIL Motor Oil reduces oil consumption and improves fuel efficiency.

Synthetic Premium Protection Motor Oil

Formulated for use in gasoline engines, pre-2007 on-road diesel engines and all model year off-road diesel engines. Offers excellent wear protection. Ideal for applications where the extra protection of a high zinc formula is desired, including hot rods, motorhomes and motorcycles. Excellent for flat tappets, high performance, heavy duty and high mileage applications.

SAE 10W-40 SYNTHETIC PREMIUM PROTECTION MOTOR OIL

API Service SL/CF, SJ, SH . . . , CI-4+

- JASO MA (motorcycle wet clutch) • ISO-L-EMA

| Stock# | Unit of Measure | Pkg./Size | Wt.Lbs. | Cost |
|--------|-----------------|-----------------|---------|--------|
| AMOQT | EA | (1) Quart | 2.1 | 7.70 |
| AMOQT | CA | (12) Quarts | 24.7 | 91.20 |
| AMO1G | EA | (1) Gallon | 8.0 | 29.50 |
| AMO1G | CA | (4) Gallons | 31.8 | 116.40 |
| AMOTP | EA | (1) 2.5 Gallon | 19.5 | 72.10 |
| AMOTP | CA | (2) 2.5 Gallons | 39.0 | 142.20 |

SAE 20W-50 SYNTHETIC PREMIUM PROTECTION MOTOR OIL

API Service SL/CF, SJ, SH . . . , CI-4+

- JASO MA (motorcycle wet clutch) • ISO-L-EMA

| Stock# | Unit of Measure | Pkg./Size | Wt.Lbs. | Cost |
|--------|-----------------|-------------|---------|--------|
| AROQT | EA | (1) Quart | 2.1 | 8.40 |
| AROQT | CA | (12) Quarts | 25.1 | 99.60 |
| ARO1G | EA | (1) Gallon | 8.1 | 32.35 |
| ARO1G | CA | (4) Gallons | 32.4 | 127.80 |

Synthetic 5W-40 European Motor Oil

Specially formulated for the lubrication needs of European gasoline and diesel cars and light trucks. Blended with advanced AMSOIL synthetic base stocks, premium additives and a broad 5W-40 viscosity rating, allowing motorists to take advantage of the maximum extended drain intervals recommended by European automakers while providing second-to-none protection and performance.

AMSOIL Synthetic 5W-40 European Motor Oil is recommended for applications requiring the following performance specifications:

- API SM/CF • ACEA C3 • ACEA A3/B3-04
- ACEA A3/B4-04 • MB 229.31, 229.51 • BMW LL-04
- Daimler Chrysler MS-10725 • Porsche • Saab
- Volvo • VW 502.00, 505.00, 505.01

SYNTHETIC 5W-40 EUROPEAN MOTOR OIL

| Stock # | Unit of Measure | Pkg./Size | Wt. Lbs. | Cost |
|---------|-----------------|-------------|----------|-------|
| AFLQT | EA | (1) Quart | 2.1 | 8.00 |
| AFLQT | CA | (12) Quarts | 25.3 | 94.80 |



Recommended for
VW 505.01,
Mercedes-Benz 229.51
and BMW LL-04





Synthetic 15W-40 Heavy Duty Diesel Oils

Engineered for pre-2007 on-road diesel engines and all model year off-road diesel engines. High 12 TBN controls acids from combustion blow-by and EGR. High levels of detergency and dispersancy additives control soot thickening, oxidation and wear. Protects against bore polishing, deposit formation and ring sticking. Provides clean engine performance. Extended drain capabilities reduce downtime and motor oil expenses. Heavy Duty Diesel and Marine Motor Oil provides up to 25,000-mile or one-year drain intervals in diesel pickups. See the AMSOIL Product Information and Drain Interval Chart (G2281, \$0.35) for more information. For 2007 and newer on-road diesel vehicles, see Synthetic 5W-40 Premium Diesel Oil on pg. 11.

SAE 15W-40 SYNTHETIC HEAVY DUTY DIESEL AND MARINE MOTOR OIL

**API CI-4+/CF/CF-2/SL • Global DHD-1 • ACEA A3/B3, E3, E5
JASO DH-1 • Mack • Detroit Diesel • Caterpillar
Cummins • Volvo • Daimler-Benz**

| Stock# | Unit of Measure | Pkg./Size | Wt.Lbs. | Cost |
|--------|-----------------|-----------------|---------|--------|
| AMEQT | EA | (1) Quart | 2.1 | 7.15 |
| AMEQT | CA | (12) Quarts | 24.9 | 84.60 |
| AME1G | EA | (1) Gallon | 8.0 | 27.15 |
| AME1G | CA | (4) Gallons | 32.0 | 107.00 |
| AMETP | EA | (1) 2.5 Gallon | 19.6 | 64.80 |
| AMETP | CA | (2) 2.5 Gallons | 39.1 | 127.60 |

**SAE 15W-40 SYNTHETIC BLEND GASOLINE & DIESEL OIL
API CI-4+/CF/CF-2/SL • Global DHD-1 • ACEA A3/B3, E3, E5
JASO DH-1 • Mack • Detroit Diesel • Caterpillar
Cummins • Volvo • Daimler-Benz**

| Stock# | Unit of Measure | Pkg./Size | Wt.Lbs. | Cost |
|--------|-----------------|-----------------|---------|--------|
| PCOQT | EA | (1) Quart | 2.1 | 6.20 |
| PCOOT | CA | (12) Quarts | 24.9 | 73.20 |
| PCO1G | EA | (1) Gallon | 8.0 | 22.55 |
| PCO1G | CA | (4) Gallons | 32.0 | 88.60 |
| PCOTP | EA | (1) 2.5 Gallon | 19.6 | 53.40 |
| PCOTP | CA | (2) 2.5 Gallons | 39.1 | 104.80 |

Oil Analysis

AMSOIL and its subsidiary OAI Inc. provide state-of-the-art oil analysis service to its customers. Customers receive detailed analysis reports via mail. Fax, e-mail and online reporting is also available. Expert consultation of oil condition is easily accessible by phone (877-458-3315) or e-mail (info@oaitesting.com).

Coolant and diesel fuel analysis is also available. For more information, see www.oaitesting.com.

| Stock# | Pkg./Size | Wt. Lbs. | Cost |
|--------|--|----------|-------|
| OAI01 | (1) sample kit (includes two-way postage) | 0.1 | 28.20 |
| OAI02 | (1) sample kit (includes UPS shipping) | 0.1 | 27.85 |
| OAI06 | (1) sample kit | 0.1 | 22.45 |
| G1206 | Oil Suction Pump w/10-ft. hose | 0.1 | 27.80 |
| G1571 | Replacement Hose 25-ft. | 0.1 | 8.85 |

Oil Analyzers

INC.

Synthetic 10W-30/SAE 30 Heavy Duty Diesel Oil

Exceeds both 10W-30 multi-grade and SAE 30 straight-grade viscosity requirements. Engineered for pre-2007 on-road diesel engines and all model year off-road diesel engines. Also recommended for gasoline engines requiring API SL or previous specifications. Excellent for heavy equipment and personal vehicles. Extends drain intervals. See the AMSOIL Product Information and Drain Interval Chart (G2281, \$0.35) for more information. For 2007 and newer on-road diesel vehicles, see Synthetic 5W-40 Premium Diesel Oil below.



SYNTHETIC 10W-30/SAE 30 HEAVY DUTY DIESEL OIL

API CI-4+/CF/CF-2/SL • Global DHD-1 • ACEA A3/B3, E3, E5 • JASO DH-1 • Mack • Detroit Diesel • Caterpillar • Cummins • Volvo • Daimler-Benz

| Stock# | Unit of Measure | Pkg./Size | Wt. Lbs. Cost | |
|--------|-----------------|-------------|---------------|--------|
| ACD1G | EA | (1) Gallon | 8.1 | 27.75 |
| ACD1G | CA | (4) Gallons | 32.4 | 109.40 |

Synthetic 5W-40 Premium API CJ-4 Diesel Oil

The premium choice diesel oil for model year 2007 and newer heavy-duty and pickup truck diesel engines requiring API CJ-4 emission quality oil standards. Withstands the stress of heat, soot and acids to help prevent deposits, corrosion and wear. Broad viscosity range offers superior protection over a wide temperature range. Recommended for the longest service interval established by the engine, vehicle or equipment manufacturer. Drain intervals may be extended based on oil analysis. Compatible with all exhaust treatment devices and designed to extend the service life of particulate filters. Replaces 5W-40, 10W-40 and 15W-40 viscosity oils and is "backwards compatible" with pre-2007 diesel engines.



SAE 5W-40 SYNTHETIC PREMIUM DIESEL OIL

API CJ-4, CI-4+, CH-4, CF • API SM, SL, SJ...

• ACEA E7 • Mack EO-O Premium Plus • DDC Power Guard 93K218 • Caterpillar ECF-3, ECF-1 • Cummins CES 20081 • Volvo VDS-4 • MB 228.3 • MTU Type II

| Stock# | Unit of Measure | Pkg./Size | Wt. Lbs. Cost | |
|--------|-----------------|-------------|---------------|--------|
| DEOQT | EA | (1) Quart | 2.1 | 7.80 |
| DEOQT | CA | (12) Quarts | 24.6 | 92.40 |
| DE01G | EA | (1) Gallon | 8.0 | 28.65 |
| DE01G | CA | (4) Gallons | 31.8 | 113.00 |



HP Injector Synthetic 2-Cycle Oil

Precise synthetic formulation exceeds the lubrication demands of modern two-cycle engines. Premium synthetic base oils and MAX-DOSE additive system provides superior performance in direct fuel injected (DFI), electronic fuel injected (EFI) and carbureted outboard motors, as well as other recreational two-cycle equipment.

HP INJECTOR SYNTHETIC 2-CYCLE OIL TC-W3 / API TC

| Stock# | Unit of Measure | Pkg./Size | Wt. Lbs. | Cost |
|--------|-----------------|-------------|----------|--------|
| HPIQT | EA | (1) Quart | 2.0 | 7.40 |
| HPIQT | CA | (12) Quarts | 24.5 | 87.60 |
| HPI1G | EA | (1) Gallon | 7.9 | 27.45 |
| HPI1G | CA | (4) Gallons | 31.7 | 108.20 |

DOMINATOR Synthetic 2-Cycle Racing Oil

Robust formulation specially engineered for unsurpassed protection in high performance two-cycle motors, both on and off the track. Heavier synthetic base oils provide more *lubricity* for "on the edge" operation. Reduces friction and protects pistons and bearings subjected to the rigors of racing.

DOMINATOR SYNTHETIC 2-CYCLE RACING OIL API TC / JASO FC

| Stock# | Unit of Measure | Pkg./Size | Wt. Lbs. | Cost |
|--------|-----------------|-------------|----------|--------|
| TDRQT | EA | (1) Quart | 2.1 | 9.35 |
| TDRQT | CA | (12) Quarts | 25.1 | 111.00 |
| TDR1G | EA | (1) Gallon | 8.1 | 35.80 |
| TDR1G | CA | (4) Gallons | 32.4 | 141.60 |

Interceptor Synthetic 2-Cycle Oil

Engineered specially for power sports applications and those engines equipped with exhaust power valves. Contains the finest synthetic base oils and additives available for exceptional cleanliness properties. Controls exhaust valve sticking and provides outstanding overall lubrication properties.

INTERCEPTOR SYNTHETIC 2-CYCLE OIL API TC / JASO FC

| Stock# | Unit of Measure | Pkg./Size | Wt. Lbs. | Cost |
|--------|-----------------|-------------|----------|--------|
| AITQT | EA | (1) Quart | 2.1 | 8.90 |
| AITQT | CA | (12) Quarts | 25.5 | 105.60 |
| AIT1G | EA | (1) Gallon | 8.2 | 33.65 |
| AIT1G | CA | (4) Gallons | 33.0 | 133.00 |



Saber Synthetic 100:1 Pre-Mix 2-Cycle Oils

Specifically designed for lean mix ratios in pre-mix applications. Saber Professional contains high temperature detergents for small power equipment. Saber Outboard contains lower temperature dispersants for water-cooled outboard motors.

SABER PROFESSIONAL SYNTHETIC 100:1 PRE-MIX 2-CYCLE OIL

ISO-L-EGD / API TC / JASO FD

| Stock# | Unit of Measure | Pkg./Size | Wt. Lbs. | Cost |
|--------|-----------------|---------------------------|----------|--------|
| ATPBC | EA | (1) 8-oz. Bottle | 0.7 | 3.70 |
| ATPBC | CA | (12) 8-oz. Bottles | 8.6 | 43.20 |
| ATPPK | EA | (1) 1.5-oz. Pillow Pack | 0.2 | 1.30 |
| ATPPK | CA | (48) 1.5-oz. Pillow Packs | 7.2 | 60.00 |
| ATPQT | EA | (1) Quart | 2.1 | 9.15 |
| ATPQT | CA | (12) Quarts | 25.4 | 108.60 |
| ATPBA | EA | (1) 3.5-oz. Bottle | 0.4 | 2.10 |
| ATPBA | CA | (12) 3.5-oz. Bottles | 4.5 | 24.00 |

SABER OUTBOARD SYNTHETIC 100:1 PRE-MIX 2-CYCLE OIL

TC-W3 / API TC

| Stock# | Unit of Measure | Pkg./Size | Wt. Lbs. | Cost |
|--------|-----------------|--------------------|----------|--------|
| ATOBC | EA | (1) 8-oz. Bottle | 0.7 | 3.90 |
| ATOBC | CA | (12) 8-oz. Bottles | 8.7 | 45.60 |
| ATOQT | EA | (1) Quart | 2.2 | 9.10 |
| ATOQT | CA | (12) Quarts | 25.8 | 108.00 |



AMSOIL 2-Cycle Oil Recommendations

| AMSOIL 2-Cycle Oil | Outboard* | Snowmobile*, Motorcycle* & ATV* | Personal Watercraft* & Jet Boat* | Chain Saw, Chop Saw & Pump | Weed Eater, Blower & Lawn Mower | Moped, Scooter & Go-Cart |
|--|---------------------------|------------------------------------|-------------------------------------|-------------------------------|------------------------------------|-----------------------------|
| HP Injector (HPI) TC-W3, API TC (Injection or 50:1 Pre-Mix) | Excellent (4) (5) | Very Good | Very Good | Not Recommended | Not Recommended | Not Recommended |
| INTERCEPTOR (AIT) API TC, JASO FC (Injection or 50:1 Pre-Mix) | Not Recommended | Excellent (4) | Excellent (3) (4) | Good | Good | Good |
| DOMINATOR (TDR) API TC, JASO FC (Injection or 50:1 Pre-Mix) | Racing (1) | Racing (2) | Racing (2) (3) | Very Good | Very Good | Very Good |
| Saber Professional 100:1 Pre-Mix (ATP) ISO-L-EGD, JASO FD, API TC | Not Recommended | Very Good Pre-Mix Only | Very Good Pre-Mix Only (3) | Excellent | Excellent | Excellent |
| Saber Outboard 100:1 Pre-Mix (ATO) TC-W3, API TC | Excellent Pre-Mix Only | Very Good Pre-Mix Only | Very Good Pre-Mix Only | Not Recommended | Not Recommended | Not Recommended |

Equipment manufacturers and motor builders have redesigned two-cycle motors to reduce emissions and increase fuel economy. These changes have increased operating temperatures, reduced oil consumption and incorporated direct fuel injection and exhaust power valves. AMSOIL 2-Cycle Oils are designed to maximize performance in all types of engine designs and are optimized for select applications.

Even though AMSOIL 2-Cycle Oils have been optimized for specific applications, they are multi-functional and recommended for use in many areas. The chart rates each oil's performance abilities per application as follows:

Excellent: The primary recommendation for the oil. The oil is specifically designed for the operating conditions of the motors in these markets. There is only one "Excellent" recommendation per category.

Very Good: A main recommendation for the oil. Identifies an oil that is very good for the operating conditions of these motors.

Good: A secondary recommendation for an oil. The oil was not specifically designed for these applications. However, the chemistry in the oil is suited to the operating conditions of these motors.

Not Recommended: Identifies applications where the product was not intended for use.

Notes: (1) Not recommended for long-term use in outboard motors as a TC-W3 type oil, although excellent as a racing oil for short term use where motors are periodically inspected.

(2) Excellent for racing or modified motors. Very good for recreational use.

(3) For applications calling for a TC-W3 product use the recommendations listed under Outboards.

(4) Recommended for all direct fuel injected (DFI), electronic fuel injected (EFI) and carbureted motors.

(5) Includes Mercury® Optimax®, Johnson® & Evinrude® FICHT® & E-TEC™, Yamaha® HPDI, Nissan® & Tohatsu® TLDI®.

Synthetic XL Motor Oil

AMSOIL XL Synthetic Motor Oils provide peace-of-mind. The oil drain interval recommendations for many of today's vehicles extend well beyond the traditional 3,000-mile interval, some up to 12,000 miles with electronic oil monitoring systems. Unlike petroleum oils that have 3,000-mile maximum recommendations, AMSOIL XL Oils provide 7,500-mile/six-month drain intervals or longer where stated by vehicle manufacturers or indicated by oil life monitoring systems. When using AMSOIL XL Synthetic Motor Oils, protection and performance are not sacrificed with longer drain intervals.

SYNTHETIC XL MOTOR OIL

5W-20 MOTOR OIL

API SM/CF, SL, SJ . . . , ILSAC GF-4, 3 . . .

| Stock# | Unit of Measure | Pkg./Size | Wt.Lbs. | Cost |
|--------|-----------------|-------------|---------|-------|
| XLMQT | EA | (1) Quart | 2.0 | 6.35 |
| XLMQT | CA | (12) Quarts | 24.5 | 75.00 |
| XLM1G | EA | (1) Gallon | 7.8 | 24.65 |
| XLM1G | CA | (4) Gallons | 31.3 | 97.00 |

5W-30 MOTOR OIL

API SM/CF, SL, SJ . . . , ILSAC GF-4, 3 . . .

| Stock# | Unit of Measure | Pkg./Size | Wt.Lbs. | Cost |
|--------|-----------------|-------------|---------|-------|
| XLFQT | EA | (1) Quart | 2.0 | 6.35 |
| XLFQT | CA | (12) Quarts | 24.4 | 75.00 |
| XLF1G | EA | (1) Gallon | 7.8 | 24.65 |
| XLF1G | CA | (4) Gallons | 31.4 | 97.00 |

10W-30 MOTOR OIL

API SM/CF, SL, SJ . . . , ILSAC GF-4, 3 . . .

| Stock# | Unit of Measure | Pkg./Size | Wt.Lbs. | Cost |
|--------|-----------------|-------------|---------|-------|
| XLTQT | EA | (1) Quart | 2.0 | 6.35 |
| XLTQT | CA | (12) Quarts | 24.6 | 75.00 |
| XLT1G | EA | (1) Gallon | 7.8 | 24.65 |
| XLT1G | CA | (4) Gallons | 31.4 | 97.00 |

10W-40 MOTOR OIL

API SM/CF, SL, SJ . . .

| Stock# | Unit of Measure | Pkg./Size | Wt.Lbs. | Cost |
|--------|-----------------|-------------|---------|-------|
| XLOQT | EA | (1) Quart | 2.0 | 6.35 |
| XLOQT | CA | (12) Quarts | 24.3 | 75.00 |

- AMSOIL synthetic motor oils are fully compatible with conventional motor oil. For best results, however, use AMSOIL Engine Flush, then install AMSOIL synthetic motor oil (*See page 42*).

Advanced Synthetic Motorcycle Oils

SAE 20W-50 SYNTHETIC MOTORCYCLE OIL

API Service SG, SL/CF, CG-4 • JASO MA/MA2 • ISO-L-EMA2

Recommended for Harley-Davidson, Buell, KTM, Ducati, Aprilia, BMW, Triumph and other motorcycle engines. Superior synthetic formulation provides long service life and maximum protection against engine wear. Superior shear stability provides unsurpassed protection for high performance engines, transmissions and primary chaincases. No friction modifiers. Wet clutch compatible.

| Stock# | Unit of Measure | Pkg./Size | Wt. Lbs. | Cost |
|--------|-----------------|-------------|----------|--------|
| MCVQT | EA | (1) Quart | 2.1 | 9.75 |
| MCVQT | CA | (12) Quarts | 24.7 | 115.80 |
| MCV1G | EA | (1) Gallon | 8.0 | 37.35 |
| MCV1G | CA | (4) Gallons | 31.9 | 147.80 |

SAE 10W-40 SYNTHETIC MOTORCYCLE OIL

API Service SG, SL/CF • JASO MA/MA2 • ISO-L-EMA2

Recommended for Honda, Yamaha, Kawasaki, Victory, BMW and other motorcycle engines. Superior synthetic formulation provides long service life and maximum protection against engine wear. Superior shear stability provides unsurpassed protection for high performance engines and transmissions. No friction modifiers. Wet clutch compatible.

| Stock# | Unit of Measure | Pkg./Size | Wt. Lbs. | Cost |
|--------|-----------------|-------------|----------|--------|
| MCFQT | EA | (1) Quart | 2.1 | 9.50 |
| MCFQT | CA | (12) Quarts | 24.6 | 112.80 |
| MCF1G | EA | (1) Gallon | 8.0 | 35.90 |
| MCF1G | CA | (4) Gallons | 31.8 | 142.00 |

Formula 4-Stroke® Marine Synthetic Motor Oils

Formulated specifically for use in 4-stroke gasoline-fueled engines used in marine applications. Offer unsurpassed wear protection, viscosity stability, low volatility and excellent low temperature fluidity. Certified to meet NMMA FC-W performance specifications. Meet "Warranty Certified" status of engine manufacturers. Recommended for use in 4-stroke outboard motors including Honda, Yamaha, Mercury, Suzuki, Johnson-Evinrude (BRP), Nissan and Tohatsu. Excellent for use in marine inboard/outboard (I/O) engines including Mercury (MerCruiser), OMC and Volvo-Penta. Also for use with marine inboard power plants including Crusader, Marine Power, GM, Ford and Chrysler. Recommended for use with personal water craft (PWC) including Sea Doo (BRP), Honda, Yamaha and Kawasaki.

10W-30 FORMULA 4-STROKE® MARINE SYNTHETIC MOTOR OIL

API SL • NMMA FC-W (Registration #FB-30011B)

| Stock# | Unit of Measure | Pkg./Size | Wt. Lbs. | Cost |
|--------|-----------------|-------------|----------|-------|
| WCTQT | EA | (1) Quart | 2.0 | 8.30 |
| WCTQT | CA | (12) Quarts | 24.5 | 98.40 |

10W-40 FORMULA 4-STROKE® MARINE SYNTHETIC MOTOR OIL

API SL • NMMA FC-W (Registration #FB-30010B)

| Stock# | Unit of Measure | Pkg./Size | Wt. Lbs. | Cost |
|--------|-----------------|-------------|----------|--------|
| WCFQT | EA | (1) Quart | 2.0 | 8.80 |
| WCFQT | CA | (12) Quarts | 24.6 | 104.40 |



- Lawn Tractors
- Generators
- Pumps
- Welders
- Skid-Steers
- Compressors
- and more



Formula 4-Stroke® Synthetic Small Engine Oil

Provides superior protection in the hot temperature, severe service operating conditions of both gasoline and diesel-fueled small engines. Formulated with a high viscosity index and premium synthetic base oils that exceed both 10W-30 multi-grade and SAE 30 straight-grade viscosity requirements. Provides excellent all season protection and performance. As a commercial grade lubricant, it meets the demands of homeowner, commercial and industrial applications, improving productivity and reducing maintenance costs through superior engine protection.

FORMULA 4-STROKE® SYNTHETIC SMALL ENGINE OIL

API SL, SJ, SH, SG • API CF, CD

• JASO MA/MA2 (motorcycle wet clutch) • ISO-L-EMA2

| Stock# | Unit of Measure | Pkg./Size | Wt. Lbs. | Cost |
|--------|-----------------|-------------|----------|-------|
| ASEQT | EA | (1) Quart | 2.0 | 6.45 |
| ASEQT | CA | (12) Quarts | 24.1 | 76.20 |

Synthetic 4-Stroke® Power Sports Oil

Specially formulated to provide serious protection and performance in recreational four-stroke motors, including ATVs and snowmobiles. Broad 0W-40 viscosity rating provides superior protection in both hot and cold temperature extremes.

AMSOIL FORMULA 4-STROKE® POWER SPORTS SYNTHETIC MOTOR OIL

SAE 0W-40 • API Service SG, SH, SJ, SL/CF

• JASO MA/MA2 (motorcycle wet clutch) • ISO-L-EMA2

| Stock# | Unit of Measure | Pkg./Size | Wt. Lbs. | Cost |
|--------|-----------------|-------------|----------|--------|
| AFFQT | EA | (1) Quart | 2.0 | 8.55 |
| AFFQT | CA | (12) Quarts | 24.4 | 101.40 |

Formula 4-Stroke® Synthetic Scooter Oil

Formulated specifically to meet the special needs of today's high-tech air- and water-cooled four-stroke motorized scooters, offering unsurpassed wear protection and friction reduction for longer equipment life and cooler operating temperatures. Its 10W-40 viscosity ensures consistent viscosity protection and provides additional protection for transmissions and gear boxes, while its friction modifier-free formulation ensures wet clutch compatibility and smooth clutch operation. A special anti-corrosion additive package provides long-term protection during periods of inactivity and storage.

FORMULA 4-STROKE® SYNTHETIC SCOOTER OIL

API SG, SL/CF • JASO MA/MA2 (motorcycle wet clutch)

• ISO-L-EMA2

| Stock# | Unit of Measure | Pkg./Size | Wt. Lbs. | Cost |
|--------|-----------------|-------------|----------|-------|
| ASOQT | EA | (1) Quart | 2.0 | 6.50 |
| ASOQT | CA | (12) Quarts | 24.1 | 76.80 |

SEVERE GEAR® Synthetic EP Gear Lubes

Specifically engineered for high demand applications, including trailer towing, heavy hauling, 4x4 off road driving, commercial use and racing. Superior lube "film strength" combined with extra additives protects gears and bearings from scoring and wear. Resist high heat and possess excellent cold flow properties. *Outperforms all conventional gear oils.* Recommended for all types of vehicles such as turbo diesel pick-ups, SUVs, autos, trucks, heavy equipment and motor homes. Compatible with most limited-slip differentials.

SAE 75W-90 SEVERE GEAR® SYNTHETIC GEAR LUBE

Top fuel efficiency and cold temperature performance

API GL-5/MT-1 • MIL-PRF-2105E • MACK GO-J

• Dana SHAES 234 (Eaton PS-037)

| Stock# | Unit of Measure | Pkg./Size | Wt. Lbs. | Cost |
|--------|-----------------|-----------------|----------|--------|
| SVGQT | EA | (1) Quart | 2.0 | 12.15 |
| SVGQT | CA | (12) Quarts | 24.5 | 144.60 |
| SVG05 | EA | (1) 5-gal. Pail | 38.8 | 219.50 |

SAE 75W-110 SEVERE GEAR® SYNTHETIC GEAR LUBE

Extra viscosity protection without sacrificing fuel efficiency

API GL-5/MT-1 • MIL-PRF-2105E • Mack GO-J

• Dana SHAES 234 (Eaton PS-037)

| Stock# | Unit of Measure | Pkg./Size | Wt. Lbs. | Cost |
|--------|-----------------|-----------------|----------|--------|
| SVTQT | EA | (1) Quart | 2.0 | 13.15 |
| SVTQT | CA | (12) Quarts | 24.5 | 156.60 |
| SVT05 | EA | (1) 5-gal. Pail | 38.8 | 240.60 |

SAE 75W-140 SEVERE GEAR® SYNTHETIC GEAR LUBE

Maximum viscosity protection for severe duty applications

API GL-5/MT-1 • MIL-PRF-2105E • MACK GO-J

• Dana SHAES 234 (Eaton PS-037)

| Stock# | Unit of Measure | Pkg./Size | Wt. Lbs. | Cost |
|--------|-----------------|-----------------|----------|--------|
| SVOQT | EA | (1) Quart | 2.1 | 14.65 |
| SVOQT | CA | (12) Quarts | 24.7 | 174.60 |
| SVO05 | EA | (1) 5-gal. Pail | 39.2 | 267.30 |

Severe Gear Synthetic SAE 190 and SAE 250 EP Gear Lubes

High viscosity, extreme pressure gear lubes engineered for the demands of severe racing conditions, including off-road truck racing, rock racing, rock crawling, tractor pulling, funny car racing and dragster racing. Protect gears from shock loading and tire shake. Resist sling-off from G-forces and high speeds. Effectively cling to gears, promoting cooler operating temperatures and extending gear and bearing life.

SAE 190 SEVERE GEAR SYNTHETIC GEAR LUBE

API GL-5/MT-1

| Stock# | Unit of Measure | Pkg./Size | Wt. Lbs. | Cost |
|--------|-----------------|-----------------|----------|--------|
| SRNQT | EA | (1) Quart | 2.1 | 13.70 |
| SRNQT | CA | (12) Quarts | 25.1 | 163.20 |
| SRN05 | EA | (1) 5-gal. Pail | 39.9 | 252.60 |

SAE 250 SEVERE GEAR SYNTHETIC GEAR LUBE

API GL-5/MT-1

| Stock# | Unit of Measure | Pkg./Size | Wt. Lbs. | Cost |
|--------|-----------------|-----------------|----------|--------|
| SRTQT | EA | (1) Quart | 2.1 | 13.70 |
| SRTQT | CA | (12) Quarts | 25.2 | 163.20 |
| SRT05 | EA | (1) 5-gal. Pail | 40.0 | 252.60 |

One free 28-page Gear Lube Comparison Study with each case purchase

NEW!

Synthetic 80W-90 Gear Lube

High quality replacement for applications specifying SAE 80W-90 conventional gear lube. Synthetic construction provides improved cold flow properties, high viscosity index, heat resistance and excellent wear protection.

SAE 80W-90 SYNTHETIC GEAR LUBE

API GL-5/MT-1 • MIL-PRF-2105E • MACK GO-J
• Dana SHAES 234 (Eaton PS-D37)

| Stock# | Unit of Measure | Pkg./Size | Wt.Lbs. | Cost |
|--------|-----------------|-----------------|---------|--------|
| AGLQT | EA | (1) Quart | 2.1 | 8.80 |
| AGLQT | CA | (12) Quarts | 25.2 | 104.40 |
| AGL1G | EA | (1) Gallon | 8.1 | 33.00 |
| AGL1G | CA | (4) Gallons | 32.4 | 130.40 |
| AGL05 | EA | (1) 5-gal. Pail | 39.8 | 158.30 |

Long Life Synthetic Gear Lubes

Specifically engineered for extended drain intervals up to 500,000 miles as set by equipment manufacturers for over-the-road trucks. Protects against wear and improves equipment life. Excellent "All Season" summer and winter performance. *Outperforms all conventional gear oils.* Also excellent for passenger cars and trucks. Compatible with most limited-slip differentials.

SAE 75W-90 LONG LIFE SYNTHETIC GEAR LUBE

API GL-5/MT-1 • MIL-PRF-2105E • MACK GO-J+
• Dana SHAES 256 (Eaton PS-163)

| Stock# | Unit of Measure | Pkg./Size | Wt. Lbs. | Cost |
|--------|-----------------|-----------------|----------|--------|
| FGRQT | EA | (1) Quart | 2.1 | 10.00 |
| FGRQT | CA | (12) Quarts | 25.0 | 118.80 |
| FGR1G | EA | (1) Gallon | 8.1 | 38.30 |
| FGR1G | CA | (4) Gallons | 32.3 | 151.60 |
| FGR05 | EA | (1) 5-gal. Pail | 39.7 | 182.90 |

SAE 80W-140 LONG LIFE SYNTHETIC GEAR LUBE

API GL-5/MT-1 • MIL-PRF-2105E • MACK GO-J+
• Dana SHAES 256 (Eaton PS-163)

| Stock# | Unit of Measure | Pkg./Size | Wt. Lbs. | Cost |
|--------|-----------------|-----------------|----------|---------|
| FGO05 | EA | (1) 5-gal. Pail | 40.0 | 182.50 |
| FGO16 | EA | 16-gal. Keg | 135.0 | 529.00 |
| FGO30 | EA | 30-gal. Drum | 249.0 | 913.00 |
| FGO55 | EA | 55-gal. Drum | 446.0 | 1592.00 |

Universal Synthetic Marine Gear Lube

Provides true marine gear performance, resists foaming and retains extreme pressure qualities even when subjected to 10 percent water contamination. For use in outboard lower units, sterndrives, V-drives, bow and tunnel thrusters and marine transmissions requiring a SAE 75W-90 or 80W-90 meeting either GL-4 or GL-5 performance standards.

SAE 75W/80W-90 UNIVERSAL SYNTHETIC MARINE GEAR LUBE

• GL-5, GL-4

| Stock# | Unit of Measure | Pkg./Size | Wt.Lbs. | Cost |
|--------|-----------------|------------------|---------|--------|
| AGMTB | EA | (1) 13-oz. Tube | 1.2 | 7.00 |
| AGMTB | CA | (6) 13-oz. Tubes | 7.4 | 41.40 |
| AGMQT | EA | (1) Quart | 2.1 | 8.95 |
| AGMQT | CA | (12) Quarts | 25.2 | 106.20 |
| AGM05 | EA | (1) 5-gal. Pail | 39.8 | 156.25 |



**Outstanding
Protection for
Lower Units**



AMSOIL HAND PUMP

| Stock# | Wt.Lbs. | Cost |
|--------|---------|-------|
| G2039 | 1.0 | 11.10 |

Slip-Lock Differential Additive

Eliminates gear-housing chatter in cars, trucks and SUVs equipped with limited-slip, positraction and locking differentials. Reduces banging and clunking associated with automatic locking differentials. Formulated for use with both synthetic and petroleum gear lubricants and safely replaces manufacturer-recommended friction modifiers. One bottle treats differential capacities of two to four quarts.

Note: AMSOIL synthetic gear lubes do not require the use of this additive. However, not all differentials respond the same and if chatter is noticed, the addition of AMSOIL Slip Lock will eliminate it.

| Stock# | Unit of Measure | Pkg./Size | Wt. Lbs. | Cost |
|--------|-----------------|--------------------|----------|-------|
| ADABA | EA | (1) 4-oz. Bottle | .3 | 7.45 |
| ADABA | CA | (12) 4-oz. Bottles | 3.9 | 88.20 |

Shock Therapy® Suspension Fluid

Formulated for maximum stability and performance in high-performance fork and shock applications. Effectively controls friction and heat and significantly reduces wear and scuffing. Viscosity remains constant and foam and aeration are kept to a minimum, limiting shock fade and inconsistent dampening. Offers superior performance in temperature extremes.

SHOCK THERAPY SUSPENSION FLUID

| Stock# | Unit of Measure | Pkg./Size | Wt. Lbs. | Cost |
|------------------------|-----------------|-----------------|----------|--------|
| STLQT (lightweight #5) | EA | (1) Quart | 1.9 | 10.60 |
| STLQT (lightweight #5) | CA | (12) Quarts | 23.3 | 126.00 |
| STL05 (lightweight #5) | EA | (1) 5-gal. Pail | 37.7 | 179.00 |
| STMQT (medium #10) | EA | (1) Quart | 2.1 | 9.90 |
| STMQT (medium #10) | CA | (12) Quarts | 24.6 | 117.60 |
| STM05 (medium #10) | EA | (1) 5-gal. Pail | 38.1 | 171.50 |

AMSOIL STL #5 is recommended for applications that demand quick rebounds under extreme temperatures.

AMSOIL STM #10 is recommended for applications that require more dampening and slower rebounds.

Super Shift Racing Transmission Fluid

Specially formulated for high horsepower and torque conditions. Provides quick, solid shifts. Automatic transmissions do not slip, helping racers improve on elapsed times. Delivers unmatched friction reduction and reduced wear so clutch plates and transmissions last longer. Provides maximum torque transfer and brake power while resisting oxidation and thermal breakdown.

SUPER SHIFT RACING TRANSMISSION FLUID

SAE 10W • Allison C-4 • Ford Type F

| Stock# | Unit of Measure | Pkg./Size | Wt. Lbs. | Cost |
|--------|-----------------|-------------|----------|--------|
| ARTQT | EA | (1) Quart | 2.0 | 9.65 |
| ARTQT | CA | (12) Quarts | 24.3 | 114.60 |



**Use in
Ford, Chrysler
and G.M.
Transmissions**



Synthetic Universal Automatic Transmission Fluid

Exceeds the performance requirements for domestic and foreign automatic transmission fluids. Offers smooth shifting and long transmission life. Provides automatic transmissions, power steering units and hydraulic equipment with excellent lubricating protection and better performance over a wider temperature range. Resists oxidation and thermal breakdown. Provides low temperature protection. Formulated with excellent wear protection to last for extended drain intervals.

AMSOIL ATF is recommended for applications requiring the following performance specifications:
GM DEXRON® II, III & VI • Ford MERCON®, MERCON V, MERCON SP • Chrysler ATF+ thru ATF+4® • Honda Z1 (not CVT) • Toyota Type T & TIV • Mitsubishi/Hyundai Diamond SP II & III • Allison C-3, C-4 • Caterpillar TO-2 • Voith G607 & G1363 • ZF TE-ML 14A, B & C • MB 236.1, 236.2, 236.6, 236.7, 236.9 • BMW 7045E • JWS 3309 • LT 71141 (ESSO) • Nissan Matic D, J & K • Vickers I 286S & M2950S • NAG 1 & 2

Use in power steering units or hydraulics where ATF is specified. Not for use in CVT transmissions or Ford Type F applications.

SYNTHETIC UNIVERSAL AUTOMATIC TRANSMISSION FLUID

| Stock# | Unit of Measure | Pkg./Size | Wt.Lbs. | Cost |
|--------|-----------------|-----------------|---------|--------|
| ATFQT | EA | (1) Quart | 2.0 | 9.55 |
| ATFQT | CA | (12) Quarts | 24.4 | 113.40 |
| ATF1G | EA | (1) Gallon | 7.9 | 37.10 |
| ATF1G | CA | (4) Gallons | 31.4 | 146.80 |
| ATFTP | EA | (1) 2.5 Gallon | 19.3 | 88.55 |
| ATFTP | CA | (2) 2.5 Gallons | 38.5 | 175.10 |

Torque-Drive™ Synthetic Automatic Transmission Fluid

Engineered to eliminate the deficiencies common to all conventional petroleum ATFs, AMSOIL Torque-Drive™ provides superior performance and protection against thermal and oxidative degradation, sludge and varnish formation and viscosity shear down. Ideal for Allison Transmissions and heavy equipment

Recommended for use in applications specifying Allison® TES-295 or C-4, DEXRON® III, MERCON®, TE-ML 14C, Voith G-1363

TORQUE-DRIVE™ SYNTHETIC AUTOMATIC TRANSMISSION FLUID

| Stock# | Unit of Measure | Pkg./Size | Wt.Lbs. | Cost |
|--------|-----------------|-----------------|---------|--------|
| ATD1G | EA | (1) Gallon | 7.8 | 40.80 |
| ATD1G | CA | (4) Gallons | 31.2 | 161.60 |
| ATDTP | EA | (1) 2.5 Gallon | 19.2 | 100.00 |
| ATDTP | CA | (2) 2.5 Gallons | 38.2 | 198.00 |



Synthetic Manual Transmission and Transaxle Gear Lube

Designed to meet the special requirements of certain manual transmissions and transaxles. Provides improved internal component protection. Formulated with extreme pressure additives and advanced synchronesh qualities that provide smooth shifts while protecting gears, bearings and seals. Non-corrosive to yellow metals. Recommended for manual transmissions and transaxles that require 75W-85, 75W-90 or 80W-90 viscosities and any of the following performance specifications: API GL-4 and MT-1, ZF TE-ML 02B, 16A, 17A and 19A, Chrysler MS-9070, MAN 341 ML. Recommended for use in NV 4500 transmissions and replaces GM part #12346190 and Chrysler part #4874459. Meets GL-4 specifications required by some models of Acura, Hyundai, Infiniti, Kia, Land Rover, Lexus, Mazda, Mitsubishi-Fuso and Zetor. Ideal for muscle car transmissions including Muncie, Borg-Warner, Saginaw, Ford Toploader, Dearborn and New Process. Also recommended for Gear Vendors Gear Splitters.



SYNTHETIC MANUAL TRANSMISSION & TRANSAXLE GEAR LUBE

75W-90 • API GL-4

| Stock# | Unit of Measure | Pkg./Size | Wt. Lbs. | Cost |
|--------|-----------------|-----------------|----------|---------|
| MTGQT | EA | (1) Quart | 2.0 | 10.75 |
| MTGQT | CA | (12) Quarts | 24.6 | 127.80 |
| MTG05 | EA | (1) 5-gal. Pail | 38.9 | 198.10 |
| MTG55 | EA | 55-gal. Drum | 433.3 | 1836.00 |

Synthetic Tractor/Hydraulic Transmission Oil

Formulated for combinations of transmissions, hydraulic systems, final drives, power take-off systems and wet brakes, including hydrostatic lawn mower transmissions. Exceeds the most demanding "all weather" specifications of both Ford New Holland FNHA-2-C-200 & 2-C-201 and John Deere J20C & J20D, as well as most other tractor hydraulic/transmissions, eliminating the need for seasonal oil changes.



SYNTHETIC TRACTOR/HYDRAULIC TRANSMISSION OIL

SAE 5W-30

| Stock# | Unit of Measure | Pkg./Size | Wt. Lbs. | Cost |
|--------|-----------------|-----------------|----------|---------|
| ATHQT | EA | (1) Quart | 2.1 | 7.45 |
| ATHQT | CA | (12) Quarts | 25.2 | 88.20 |
| ATH05 | EA | (1) 5-gal. Pail | 39.0 | 126.75 |
| ATH30 | EA | 30-gal. Drum | 240.0 | 616.00 |
| ATH55 | EA | 55-gal. Drum | 434.0 | 1041.00 |

Synthetic Synchronesh Transmission Fluid

Specifically designed for manual transmissions and transaxles with synchronesh systems that require light viscosity, non-extreme pressure fortified oil. Formulated with advanced additive technology to provide proper friction characteristics for smooth shifting without grinding or bump shifting while providing the ultimate in gear and bearing protection. Outperforms motor oils in manual transmissions and provides excellent performance in extreme temperatures from -40° F to 300° F. Possesses outstanding anti-wear and anti-foam properties and is non-corrosive to yellow metals. Recommended for use in manual transmissions and transaxles such as: New Venture NV T350, 1500, 2550, 3500, 3550, 5600, Tremec T-4, T-5, T-18, T-176, TKO-500, TKO-600, TR3450, TR3550. Replaces GM part # 12345349, 12345577, 12377916 and 1052931, Chrysler part # 4874464 and 4874465. Meets GM specifications 9985648, 9986105 and 9985535 and Chrysler MS-9224 and MS-9417. Also replaces Honda Genuine MTF and MTF-94 used in some Range Rovers, MGs and Mini Coopers. Not for use in engines or wet clutches.

SYNTHETIC SYNCHROMESH TRANSMISSION FLUID 5W-30

| Stock# | Unit of Measure | Pkg./Size | Wt. Lbs. | Cost |
|--------|-----------------|-----------------|----------|---------|
| MTFQT | EA | (1) Quart | 2.1 | 9.25 |
| MTFQT | CA | (12) Quarts | 24.7 | 109.80 |
| MTF05 | EA | (1) 5-gal. Pail | 39.2 | 166.90 |
| MTF55 | EA | 55-gal. Drum | 435.9 | 1521.00 |

Series 2000 Synthetic Chain Case Lubricant

AMSOIL Series 2000 Chain Case Lubricant provides superior protection and performance for enclosed chains. Ideal for snowmobiles, ATVs and general equipment. Extreme Pressure additives provide extra wear protection. Extends chain life, repels water, and inhibits rust, oxidation and foam. Superior low-temperature starting, performance and protection.

| Stock# | Unit of Measure | Pkg./Size | Wt. Lbs. | Cost |
|--------|-----------------|--------------------|----------|--------|
| TCCBE | EA | (1) 12-oz. Bottle | .8 | 6.25 |
| TCCBE | CA | (6) 12-oz. Bottles | 4.8 | 36.90 |
| TCC05 | EA | (1) 5-gal. Pail | 32.4 | 146.25 |

Semi-Synthetic Bar and Chain Oil

Clings to metal surfaces better than other oils. Delivers unparalleled lubrication and protection.

| Stock# | Unit of Measure | Pkg./Size | Wt. Lbs. | Cost |
|--------|-----------------|-----------------|----------|-------|
| ABCQT | EA | (1) Quart | 2.1 | 3.70 |
| ABCQT | CA | (12) Quarts | 24.7 | 43.20 |
| ABC1G | EA | (1) Gallon | 8.1 | 15.05 |
| ABC1G | CA | (4) Gallons | 32.2 | 58.60 |
| ABC05 | EA | (1) 5-gal. Pail | 39.2 | 69.25 |

High Performance Brake Fluids

Provide superior performance in auto/light truck, high performance, racing and powersports applications. Maintain stable viscosities over a wide temperature range. Superior additive packages raise boiling points to more than 232°C (450°F). Water is kept in suspension, slowing its effects on braking systems. High boiling temperatures ensure maximum life and reliable braking power in extreme conditions.

SERIES 500 HIGH PERFORMANCE DOT 3 BRAKE FLUID

FMVSS 116 • SAE J1703 • ISO 4925

• Federal Specification V V-B-680

| Stock# | Unit of Measure | Pkg./Size | Wt. Lbs. | Cost |
|--------|-----------------|---------------------|----------|-------|
| BF3SN | EA | (1) 12-oz. Bottle | 1.0 | 6.05 |
| BF3SN | CA | (12) 12-oz. Bottles | 12.0 | 71.40 |

SERIES 600 HIGH PERFORMANCE RACING DOT 4 BRAKE FLUID

FMVSS 116 • SAE J1704

• Federal Specification V V-B-680

| Stock# | Unit of Measure | Pkg./Size | Wt. Lbs. | Cost |
|--------|-----------------|---------------------|----------|--------|
| BF4SN | EA | (1) 12-oz. Bottle | 1.0 | 13.05 |
| BF4SN | CA | (12) 12-oz. Bottles | 12.0 | 155.40 |

Propylene Glycol Antifreeze and Engine Coolant

Combines the benefits of biodegradability, low toxicity and all-climate protection. AMSOIL Propylene Glycol Antifreeze and Engine Coolant is safer for kids and pets than ethylene glycol coolants. Offer protection for 750,000 miles/7 years for over-the-road diesel trucks and 250,000 miles/7 years for gasoline vehicles.

Compatible with all other major antifreeze products.

| Stock# | Unit of Measure | Pkg./Size | Wt. Lbs. | Cost |
|--------|-----------------|--------------------|----------|--------|
| ANT1G | EA | (1) Gallon Bottle | 9.8 | 28.00 |
| ANT1G | CA | (4) Gallon Bottles | 39.0 | 110.40 |

To test freeze protection and additive concentration, order antifreeze test strips:

| Stock# | Unit of Measure | Pkg./Size | Wt. Lbs. | Cost |
|--------|-----------------|-----------|----------|------|
| G1164 | EA | 50 Strips | 0.1 | 9.45 |
| G1165 | EA | 6 Strips | 0.1 | 3.95 |

Synthetic Compressor Oil

Provides unsurpassed protection and performance in rotary screw, rotary vane, reciprocating and other compressor applications. Compatible with PAO-, ester- and petroleum-based compressor oils. Not compatible with glycol- or silicone-based compressor oils. Call AMSOIL Technical Services at (715) 399-8324 with questions.

SYNTHETIC COMPRESSOR OIL (ISO 46, SAE 20)

| Stock# | Unit of Measure | Pkg./Size | Wt. Lbs. | Cost |
|--------|-----------------|-----------------|----------|--------|
| PCIQT | EA | (1) Quart | 2.0 | 8.55 |
| PCIQT | CA | (12) Quarts | 24.4 | 101.40 |
| PCIO5 | EA | (1) 5-gal. Pail | 38.4 | 153.50 |

SYNTHETIC COMPRESSOR OIL (ISO 100, SAE 40)

| Stock# | Unit of Measure | Pkg./Size | Wt. Lbs. | Cost |
|--------|-----------------|-----------------|----------|--------|
| PCKQT | EA | (1) Quart | 2.1 | 8.60 |
| PCKQT | CA | (12) Quarts | 24.6 | 102.00 |
| PCK05 | EA | (1) 5-gal. Pail | 38.8 | 159.75 |

23



TO ORDER – Call 1-800-956-5695 7 a.m. to 5 p.m. Central Time, M - F

How to Order

TOLL-FREE TELEPHONE ORDERING

Dial 1-800-956-5695 (Contiguous 48 States Only and Alaska) *Note: when ordering from Alaska, there is a 7.5% freight surcharge on all products shipped to Alaska. Hours: 7:00 am to 5:00 pm Central Time, Monday through Friday, except for statutory holidays. When calling, please provide your Referral Number (from the back cover of the catalog).

TECHNICAL QUESTIONS

Direct all technical questions to the AMSOIL Technical Services Department, AMSOIL INC., AMSOIL Bldg., Superior, Wisconsin 54880 or call (715) 399-8324.

AMSOIL WARRANTY STATEMENT

The use of AMSOIL products will not cause mechanical damage to any mechanically sound equipment when AMSOIL products are used in full compliance with AMSOIL recommendations and instructions. For full warranty statement call 800-956-5695 and order the G1363 (\$.30).

SHIPPING AND HANDLING

Orders are subject to the following shipping and handling schedule.

| | | | |
|-----------------|----------|-------------------|---------------|
| up to 3 lbs. | • \$6.75 | 24 to 39.9 lbs. | • 44¢ per lb. |
| 3 to 6.9 lbs. | • \$7.50 | 40 to 59.9 lbs. | • 36¢ per lb. |
| 7 to 13.9 lbs. | • \$8.30 | 60 to 99.9 lbs. | • 35¢ per lb. |
| 14 to 23.9 lbs. | • \$9.35 | 100 lbs. and over | • 32¢ per lb. |

NOTE: AMSOIL products cannot be shipped to post office boxes. For products purchased in Alaska, add a 7.5% freight surcharge.

PRODUCT DAMAGED DURING SHIPPING

If there is visible damage to your order upon delivery, refuse the order. It will be returned to AMSOIL INC. for inspection and a new order will be sent at no extra charge to you. If you discover hidden damage after accepting delivery of your order, call 1-800-956-5695 for damaged product instructions.

SALES TAX INFORMATION

AMSOIL INC. has an established Sales Tax Rate for all states. Because AMSOIL is sometimes required to collect city, county and other taxes as well, the tax rate AMSOIL charges may be higher than just your sales tax. AMSOIL also collects any additional taxes on lubricating products required by certain states.

NOTE: Freight charges are subject to sales tax in Connecticut, Georgia, Nebraska, Nevada and Wisconsin. In California, Rhode Island, Texas and Utah, excise taxes are added to the product total before figuring your sales tax.

RETURN/EXCHANGE GUIDELINES

- Must be currently marketed products in resalable condition.
- All products in resalable condition can be returned within 30 days for a full refund of the purchase price and sales tax.
- Products purchased over 30 days, but less than 90 days, may be exchanged for other product of equal or greater value, less a 20 percent restocking fee.
- Customers wishing to return products after 30 days or to exchange products after 90 days will be advised to contact their Dealer for assistance.
- Shipping and handling fees are the customer's responsibility.
- Special order items cannot be exchanged or returned.

Call 1-800-956-5695 for instructions prior to returning any product.

HAWAII

AMSOIL products are available through independent AMSOIL Dealers and selected retailers. To order in Hawaii, check your local Yellow Pages or call 1-800-777-8491 for the name of your nearest AMSOIL Dealer.

OIL FILTER, AIR FILTER OR FLUID CAPACITY QUESTIONS

For oil and air filter specifications, consult your owner's manual or order the AMSOIL Filter Applications and Cross Reference Guide (G3000, 2.4 lbs, \$7.60). Assistance also available when placing order. For fluid capacity levels, consult your owner's manual or order the AMSOIL Product Selection Guide (G50, .6 lb, \$10.60). Or call the AMSOIL Technical Service Department at 715-399-8324, 7 a.m. to 5 p.m. Central Time, M - F.

QUESTIONS

For questions on shipping, sales tax, damaged products, instructions, etc., call (715) 392-7101, 8 a.m. to 5 p.m. Central Time, M - F, except for statutory holidays.

Prices subject to change without notice.

**Start buying
wholesale today**

Preferred Customer Program

Ten dollars gets you a six-month trial Preferred Customer membership for buying AMSOIL products at wholesale prices. Here's what Preferred Customers get:

- Preferred Customers buy AMSOIL products at wholesale prices. If you buy \$100 of AMSOIL products a year, a Preferred Customer membership will save you money!
- Preferred Customers can register over the telephone (1-800-777-7094). Have referral number from back page ready when calling (if one is listed).
- Preferred Customers may change their membership to become an AMSOIL Dealer at any time.
- Preferred Customers receive a kit with information on more AMSOIL products and package sizes, and the monthly AMSOIL product, racing and application magazine, the *AMSOIL Action News*.



Want More? Become an AMSOIL Dealer

AMSOIL products are sold through independent Dealers.

People like you. People who want extra money, something to do in their spare time, even a full-time business.

You can start an independent AMSOIL Dealership for under \$50 . . . and put as much — or as little — time into it as you want.

There's always plenty of support . . . never any hassles. No quotas to fill. No inventory requirements. You're your own boss. It's the ideal business opportunity.

You can sell to commercial and retail accounts as well as individuals. It's up to you . . . extra money, a full-time income or rock-bottom prices on AMSOIL products.

Call 1-800-956-5695 and order a free G1284 for information on the AMSOIL Preferred Customer Program and on becoming an independent AMSOIL Dealer.



Synthetic Heavy-Duty Grease

Extreme-pressure, moly-fortified. Provides outstanding protection for four wheel drive steering knuckles, spring shackles and other components operating in high-load conditions.

SYNTHETIC HEAVY-DUTY GREASE

N.L.G.I. No. 2, GC/LB

| Stock# | Unit of Measure | Pkg./Size | Wt.Lbs. | Cost |
|--------|-----------------|------------------------|---------|-------|
| GHDCR | EA | (1) 14-oz. Cartridge | 1.0 | 5.80 |
| GHDCR | CA | (10) 14-oz. Cartridges | 10.0 | 57.00 |

N.L.G.I. No. 1, GC/LB

| Stock# | Unit of Measure | Pkg./Size | Wt.Lbs. | Cost |
|--------|-----------------|------------------------|---------|-------|
| GHBCR | EA | (1) 14-oz. Cartridge | 1.0 | 5.80 |
| GHBCR | CA | (10) 14-oz. Cartridges | 10.0 | 57.00 |

Synthetic Multi-Purpose Grease

Reduces friction and wear in high-speed/high-temperature components such as automotive wheel bearings and electric motors. It keeps components running clean and trouble-free for outstanding performance and long life.

SYNTHETIC MULTI-PURPOSE GREASE

N.L.G.I. No. 2, GC/lb

| Stock# | Unit of Measure | Pkg./Size | Wt.Lbs. | Cost |
|--------|-----------------|------------------------|---------|-------|
| GLCCR | EA | (1) 14-oz. Cartridge | 1.0 | 5.45 |
| GLCCR | CA | (10) 14-oz. Cartridges | 10.0 | 53.50 |
| GLCTB | EA | (1) 8-oz. Tube | 0.7 | 5.45 |
| GLCTB | CA | (12) 8-oz. Tubes | 8.0 | 64.20 |

N.L.G.I. No. 1, GC/lb

| Stock# | Unit of Measure | Pkg./Size | Wt.Lbs. | Cost |
|--------|-----------------|------------------------|---------|-------|
| GLBCR | EA | (1) 14-oz. Cartridge | 1.0 | 5.45 |
| GLBCR | CA | (10) 14-oz. Cartridges | 10.0 | 53.50 |

Synthetic Water Resistant Grease

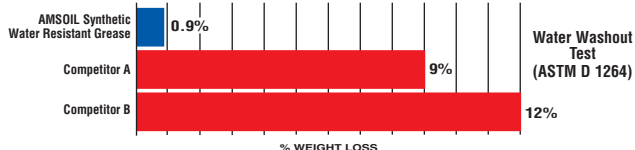
Resists water washout and degradation. Unparalleled protection for boat trailer wheel bearings and other components frequently exposed to water.

SYNTHETIC WATER RESISTANT GREASE

N.L.G.I. No. 2

| Stock# | Unit of Measure | Pkg./Size | Wt.Lbs. | Cost |
|--------|-----------------|------------------------|---------|-------|
| GWRCR | EA | (1) 14-oz. Cartridge | 1.0 | 6.40 |
| GWRCR | CA | (10) 14-oz. Cartridges | 10.0 | 63.00 |

Grease That Won't Wash Away.



Series 2000 Synthetic Racing Grease

Ultimate protection for hard-driven, high-performance vehicles. Dramatically reduces friction and wear for improved performance.

SERIES 2000 SYNTHETIC RACING GREASE

N.L.G.I. No. 2, GC/LB

| Stock# | Unit of Measure | Pkg./Size | Wt. Lbs. | Cost |
|--------|-----------------|------------------------|----------|--------|
| GRGCR | EA | (1) 14-oz. Cartridge | 1.0 | 11.15 |
| GRGCR | CA | (10) 14-oz. Cartridges | 10.0 | 111.50 |

X-Treme Synthetic Food Grade Grease

An ultra-premium lubricant designed for high levels of protection in food and pharmaceutical industry equipment. USDA H-1 rated for incidental contact with food.

X-TREME SYNTHETIC FOOD GRADE GREASE

N.L.G.I. NO. 2 HIGH TEMPERATURE EP

| Stock# | Unit of Measure | Pkg./Size | Wt. Lbs. | Cost |
|--------|-----------------|------------------------|----------|-------|
| GXCRC | EA | (1) 14-oz. Cartridge | 1.0 | 9.00 |
| GXCRC | CA | (10) 14-oz. Cartridges | 10.0 | 89.00 |

Synthetic Multi-Purpose Spray Grease

The same great AMSOIL Synthetic Multi-Purpose Grease in a convenient spray formulation. Ideal for greasing hard-to-reach equipment such as hinges, springs and many other common applications.

SYNTHETIC MULTI-PURPOSE SPRAY GREASE

| Stock# | Unit of Measure | Pkg./Size | Wt. Lbs. | Cost |
|--------|-----------------|-----------------------------|----------|-------|
| GLCSC | EA | (1) 10.5-fl. oz Spray Can | 1.0 | 6.95 |
| GLCSC | CA | (12) 10.5-fl. oz Spray Cans | 11.7 | 82.20 |

"Before using AMSOIL, two of our race cars were suffering wheel bearing seizure on a regular basis. This year, using AMSOIL Wheel Bearing Grease, our problems stopped totally."

H.C., HOUSTON, TX





Series 2000 Octane Boost

AMSOIL Series 2000 Octane Boost improves the performance of all two-cycle and four-cycle gasoline fueled engines. AMSOIL Octane Boost maximizes power, reduces engine knock and improves ignition and engine response. Helps fuel burn cleaner and removes carbon deposits. Excellent as a lead substitute at same treat rates in collector automobiles, older off-road equipment, 4x4 off-road vehicles and gasoline racing vehicles. One bottle treats 15 gallons.

| Stock# | Unit of Measure | Pkg./Size | Wt.Lbs. | Cost |
|--------|-----------------|--------------------|---------|-------|
| AOBBE | EA | (1) 12-oz. Bottle | .8 | 8.95 |
| AOBBE | CA | (6) 12-oz. Bottles | 4.7 | 53.10 |

**Industry's Most
Advanced Formulation
Improves Fuel
Economy**



PI Performance Improver

PI Performance Improver is the most potent gasoline additive available today. As a concentrated detergent, it is unsurpassed in cleaning combustion chamber deposits, intake valve deposits and port fuel injector deposits, eliminating the need for expensive fuel injector cleaning procedures. It is ideal for use prior to emissions inspections, and it helps maintain peak engine efficiency, fuel economy, power and drivability in newer low mileage engines. In engines with accumulated deposits, PI provides improved fuel mileage up to 5.7%, reduced emissions, restored power and performance, reduced need for higher octane fuel, reduced carbon rap and pre-ignition, better drivability and smoother operation after only one tank of gasoline. Treat one full tank of gas every 4,000 miles or 100 hours of service.

| Stock# | Unit of Measure | Pkg./Size | Wt.Lbs. | Cost |
|--------|-----------------|---------------------|---------|--------|
| APICN | EA | (1) 12-oz. Bottle | 0.9 | 8.90 |
| APICN | CA | (12) 12-oz. Bottles | 11.2 | 105.60 |



Gasoline Stabilizer

AMSOIL Gasoline Stabilizer keeps fuel from deteriorating during storage. AMSOIL Gasoline Stabilizer reduces the oxidation process and prevents varnish and gum buildup in gasoline. These contaminants can clog injectors, stick floats and cause poor engine performance. Treat rate is one ounce with every 2.5 gallons of fuel. Treats 40 gallons total.

| Stock# | Unit of Measure | Pkg./Size | Wt.Lbs. | Cost |
|--------|-----------------|--------------------|---------|-------|
| ASTBF | EA | (1) 16-oz. Bottle | 1.1 | 8.40 |
| ASTBF | CA | (6) 16-oz. Bottles | 6.5 | 49.80 |

Engine Fogging Oil

Superior film retention provides stored equipment with long-term protection against corrosion and dry starts, extending engine life and reducing operating expenses. Its aerosol spray formulation offers easy and clean applications, while reaching more components and offering complete distribution of the oil, something especially beneficial in applications with horizontal cylinder orientation, such as outboard motors.

| Stock# | Unit of Measure | Pkg./Size | Wt. Lbs. | Cost |
|--------|-----------------|-------------------------|----------|-------|
| FOGSC | EA | (1) 12-oz. Aerosol Can | 0.8 | 5.60 |
| FOGSC | CA | (6) 12-oz. Aerosol Cans | 5.0 | 33.00 |

Diesel Concentrate

Total system cleaner and lubricity improver for all types of heavy and light-duty diesel engines. Formulated with Ultra Low Sulfur Diesel fuel (ULSD) in mind, Diesel Concentrate controls the problems created by EGR systems by neutralizing acids during combustion, minimizing acidic cylinder wear, reducing the rate of TBN depletion and maintaining oil quality. Cleans fuel injectors and combustion chamber for improved efficiency and better sealing and minimizes soot loading. Improves the oxidation and thermal stability of diesel fuel, improves fuel economy by up to five percent, restores horsepower and protects against water contamination. Compatible with all types of exhaust emission systems, including diesel particulate filters (DPF's). Also recommended in heating oil furnace applications.

| Stock# | Unit of Measure | Pkg./Size | Wt. Lbs. | Cost |
|--------|-----------------|---------------------|----------|--------|
| ADFCN | EA | (1) 16-oz. Bottle | 1.2 | 6.75 |
| ADFCN | CA | (12) 16-oz. Bottles | 14.0 | 79.80 |
| ADF05 | EA | (1) 5-gal. Pail | 39.7 | 178.25 |

Diesel Cold Flow Improver

Recommended for low temperature applications below 40°F. Effectively modifies wax crystal formation at low temperatures to depress diesel fuel pour point and improve cold flow filtration properties. Lowers the cold filter plugging point by as much as 20°F and decreases the need for #1 diesel fuel diluted with kerosene. Contains jet fuel-type deicer to help prevent ice formation in fuels contaminated with water. Compatible with diesel particulate filters (DPF's).

| Stock# | Unit of Measure | Pkg./Size | Wt. Lbs. | Cost |
|--------|-----------------|---------------------|----------|--------|
| ACFCN | EA | (1) 16-oz. Bottle | 1.2 | 6.05 |
| ACFCN | CA | (12) 16-oz. Bottles | 14.2 | 71.40 |
| ACF05 | EA | (1) 5-gal. Pail | 40.2 | 146.50 |

Cetane Boost Diesel Fuel Additive

Improves combustion efficiency to increase power in diesel engines. Raises Cetane three to seven numbers. Also improves low-temperature starting, fuel ignition quality and reliability. Treats up to 160 gallons.

| Stock# | Unit of Measure | Pkg./Size | Wt. Lbs. | Cost |
|--------|-----------------|---------------------|----------|--------|
| ACBCN | EA | (1) 16-oz. Bottle | 1.3 | 7.50 |
| ACBCN | CA | (12) 16-oz. Bottles | 15.5 | 88.80 |
| ACB05 | EA | (1) 5-gal. Pail | 43.3 | 201.00 |





Ea Air Filters

AMSOIL Ea Air Filters incorporate nanofiber technology which has been used exclusively in severe and heavy duty applications. AMSOIL Ea Filters are more efficient and have greater capacity than cellulose and wet gauze filters, effectively extending engine and filter life and reducing engine wear. Cleaning of Ea Filters with a shop vacuum or low pressure shop air is recommended every 25,000 miles or one year, and they have a total service life of 100,000 miles or four years.

AMSOIL can find your vehicle's filter number or cross reference filters for your vehicle from the manufacturer part number of the filters you are currently using. Call 1-800-956-5695 (Monday - Friday, 8 a.m. - 5 p.m. Central Time) with vehicle or filter information when ordering. You may also contact the AMSOIL Dealer listed on the back of your catalog (if one is listed), or order the Filter Applications and Cross Reference Guide (G3000, \$7.60). For convenience, complete the form on the bottom of the next page.

Ea Air and Oil Filters are available to Dealers and Preferred Customers in case lots. See page 25 for information on becoming a Dealer or Preferred Customer.

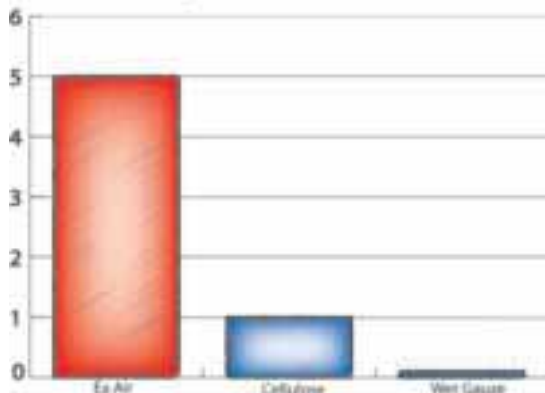
Ea Air Filters - Single Filters

| Stock# | Unit of Measure | Wt. Lbs. | Cost |
|--------|-----------------|----------|-------|
| EaA04 | EA | 0.9 | 34.15 |
| EaA08 | EA | 1.0 | 38.10 |
| EaA22 | EA | 0.9 | 29.55 |
| EaA23 | EA | 1.1 | 29.55 |
| EaA24 | EA | 0.9 | 34.15 |
| EaA25 | EA | 2.1 | 38.10 |
| EaA29 | EA | 1.0 | 38.10 |
| EaA31 | EA | 1.5 | 34.15 |
| EaA32 | EA | 1.1 | 29.55 |
| EaA47 | EA | 0.6 | 29.55 |
| EaA49 | EA | 0.8 | 34.15 |
| EaA51 | EA | 1.9 | 38.10 |
| EaA52 | EA | 0.7 | 38.10 |
| EaA74 | EA | 0.8 | 34.15 |
| EaA81 | EA | 0.7 | 29.55 |
| EaA82 | EA | 0.7 | 29.55 |
| EaA83 | EA | 1.3 | 47.45 |
| EaA86 | EA | 0.6 | 29.55 |
| EaA87 | EA | 0.6 | 29.55 |
| EaA88 | EA | 0.7 | 34.15 |
| EaA101 | EA | 0.9 | 34.15 |
| EaA103 | EA | 2.5 | 59.10 |
| EaA104 | EA | 1.2 | 47.45 |
| EaA106 | EA | 1.9 | 47.45 |
| EaA111 | EA | 2.3 | 59.10 |
| EaA112 | EA | 2.8 | 59.10 |

Ea Air Filters - Single Filters

| Stock# | Unit of Measure | Wt. Lbs. | Cost |
|--------|-----------------|----------|-------|
| EaA118 | EA | 1.3 | 38.10 |
| EaA121 | EA | 1.8 | 47.45 |
| EaA122 | EA | 1.1 | 38.10 |
| EaA123 | EA | 1.7 | 47.45 |
| EaA124 | EA | 0.8 | 38.10 |
| EaA126 | EA | 1.0 | 34.15 |
| EaA127 | EA | 0.8 | 34.15 |
| EaA128 | EA | 1.1 | 38.10 |
| EaA129 | EA | 1.1 | 34.15 |
| EaA170 | EA | 1.0 | 34.15 |
| EaA176 | EA | 1.5 | 47.45 |
| EaA189 | EA | 1.5 | 47.45 |
| EaA191 | EA | 1.1 | 38.10 |
| EaA200 | EA | 1.0 | 38.10 |
| EaA201 | EA | 0.8 | 38.10 |
| EaA202 | EA | 0.8 | 29.55 |
| EaA203 | EA | 1.9 | 47.45 |
| EaA204 | EA | 1.5 | 47.45 |
| EaA205 | EA | 1.2 | 34.15 |
| EaA206 | EA | 0.9 | 34.15 |
| EaA207 | EA | 1.0 | 34.15 |
| EaA208 | EA | 1.0 | 34.15 |
| EaA209 | EA | 1.0 | 47.45 |
| EaA210 | EA | 0.9 | 38.10 |
| EaA211 | EA | 1.3 | 47.45 |
| EaA212 | EA | 1.0 | 38.10 |
| EaA213 | EA | 0.9 | 38.10 |
| EaA214 | EA | 0.8 | 38.10 |
| EaA215 | EA | 2.5 | 47.45 |
| EaA216 | EA | 1.6 | 47.45 |
| EaA217 | EA | 0.8 | 47.45 |
| EaA218 | EA | 0.5 | 47.45 |
| EaA219 | EA | 0.5 | 38.10 |
| EaA220 | EA | 0.5 | 38.10 |
| EaA221 | EA | 1.0 | 38.10 |
| EaA222 | EA | 1.0 | 47.45 |
| EaA223 | EA | 0.3 | 47.45 |
| EaA224 | EA | 0.4 | 38.10 |
| EaA225 | EA | 0.5 | 38.10 |
| EaA226 | EA | 0.9 | 47.45 |
| EaA227 | EA | 0.2 | 47.45 |
| EaA228 | EA | 0.8 | 34.15 |
| EaA229 | EA | 0.8 | 29.55 |
| EaA232 | EA | 1.0 | 29.55 |
| EaA233 | EA | 0.2 | 29.55 |
| EaA234 | EA | 1.0 | 29.55 |
| EaA237 | EA | 0.2 | 34.15 |
| EaA238 | EA | 1.0 | 34.15 |
| EaA239 | EA | 0.9 | 29.55 |
| EaA240 | EA | 4.5 | 34.15 |
| EaA289 | EA | 0.9 | 38.10 |
| EaA416 | EA | 1.0 | 34.15 |
| EaA419 | EA | 0.9 | 38.10 |
| EaA484 | EA | 1.0 | 38.10 |
| EaA524 | EA | 0.7 | 34.15 |
| EaA728 | EA | 1.7 | 47.45 |

Efficiency Measured at 0.8 Microns



AMSOIL Ea Air Filter media removes 5 times more dust than traditional cellulose filters and 50 times more dust than wet gauze.

Ea Oil Filters

AMSOIL Ea Oil Filters are the highest efficiency filters available to the auto/light truck market. Featuring advanced full synthetic nanofiber technology, Ea Oil Filters provide greater efficiency, capacity and durability than cellulose filters, extending engine and filter life and reducing engine wear. When used in conjunction with AMSOIL Synthetic Motor Oil in gasoline and diesel vehicles, Ea Oil Filters are recommended for up to 25,000 miles or one year, whichever comes first, in normal service or up to 15,000 miles or one year, whichever comes first, in severe service.



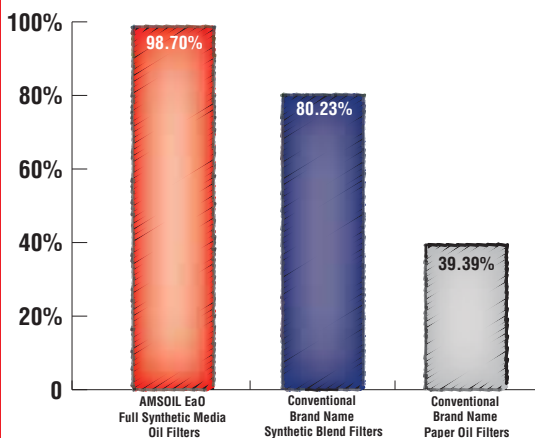
Ea Oil Filters - Single Filters

| Stock# | Unit of Measure | Wt. Lbs. | Cost |
|--------|-----------------|----------|-------|
| Ea009 | EA | 0.6 | 15.30 |
| Ea010 | EA | 0.6 | 15.30 |
| Ea011 | EA | 0.9 | 17.30 |
| Ea012 | EA | 0.6 | 15.95 |
| Ea013 | EA | 0.6 | 16.65 |
| Ea014 | EA | 0.6 | 16.65 |
| Ea015 | EA | 1.0 | 18.10 |
| Ea020 | EA | 0.7 | 16.00 |
| Ea021 | EA | 0.9 | 17.30 |
| Ea022 | EA | 1.1 | 23.20 |
| Ea023 | EA | 0.8 | 16.65 |
| Ea024 | EA | 0.6 | 18.60 |
| Ea025 | EA | 1.0 | 17.30 |
| Ea026 | EA | 1.3 | 23.20 |
| Ea027 | EA | 1.1 | 17.30 |
| Ea029 | EA | 0.7 | 16.65 |
| Ea030 | EA | 1.0 | 16.65 |
| Ea031 | EA | 1.0 | 17.30 |
| Ea032 | EA | 0.8 | 15.65 |
| Ea033 | EA | 0.7 | 15.95 |
| Ea034 | EA | 0.8 | 17.30 |
| Ea035 | EA | 0.9 | 17.30 |
| Ea036 | EA | 0.8 | 16.65 |
| Ea037 | EA | 0.7 | 17.30 |
| Ea038 | EA | 0.7 | 17.30 |
| Ea039 | EA | 1.2 | 17.30 |
| Ea040 | EA | 1.0 | 17.30 |
| Ea041 | EA | 1.0 | 17.30 |
| Ea042 | EA | 1.0 | 18.10 |
| Ea043 | EA | 1.0 | 17.30 |
| Ea044 | EA | 1.0 | 18.25 |
| Ea045 | EA | 1.1 | 17.30 |
| Ea046 | EA | 0.7 | 17.30 |
| Ea047 | EA | 0.7 | 23.20 |
| Ea052 | EA | 1.0 | 17.30 |

Ea Oil Filters - Single Filters

| Stock# | Unit of Measure | Wt. Lbs. | Cost |
|--------|-----------------|----------|-------|
| Ea057 | EA | 0.7 | 15.30 |
| Ea058 | EA | 0.7 | 16.65 |
| Ea059 | EA | 0.8 | 18.25 |
| Ea064 | EA | 0.6 | 16.65 |
| Ea076 | EA | 1.6 | 23.20 |
| Ea080 | EA | 2.0 | 25.15 |
| Ea088 | EA | 0.5 | 31.00 |
| Ea096 | EA | 1.3 | 18.00 |
| Ea099 | EA | 2.2 | 27.15 |

Filter Efficiency @ 15 Microns per ISO 4548-12



Fill in your vehicle information. Then call 1-800-956-5695 (Monday – Friday, 8 a.m. – 5 p.m. Central Time). You may also contact the AMSOIL Dealer listed on the back of your catalog (if one is listed), or order the Filter Applications and Cross Reference Guide (G3000, \$7.60) to determine your AMSOIL Oil and Air Filters.

Make _____ Year _____ Model _____

Engine _____

Your AMSOIL Oil Filter is **EaO** _____ Your AMSOIL Air Filter is **EaA** _____

Your WIX Oil Filter is _____ Your WIX Air Filter is _____

Your Donaldson Oil Filter is _____ Your Donaldson Air Filter is _____

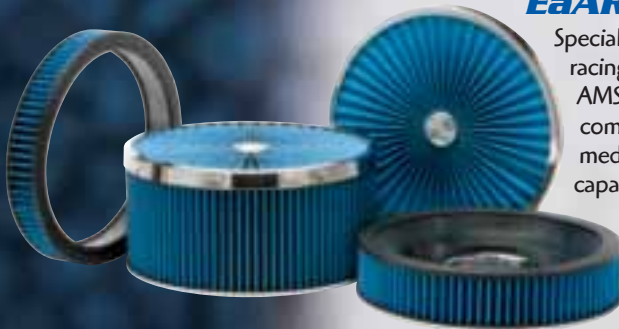


Ea Universal Air Induction Filters

AMSOIL Ea Air Induction Filters are constructed of advanced nanofiber technology and fit most popular air intake systems on the market, providing improved cold air intake and excellent efficiency for superior engine protection and performance. Ea Air Induction Filters are cleanable and remain serviceable for long filter life, saving money on filter costs. Cleaning of Ea Air Induction Filters with a shop vacuum or low pressure shop air is recommended when designated by the restriction gauge or according to operating conditions.

Call 1-715-399-8324 (Monday-Friday, 8 a.m. - 5 p.m. Central Time) for application information

| Stock# | Wt. Lbs. | Cost | Stock# | Wt. Lbs. | Cost |
|----------|----------|-------|----------|----------|-------|
| EaAU3050 | 1.5 | 49.05 | EaAU4091 | 3.6 | 92.70 |
| EaAU3051 | 1.4 | 49.05 | EaAU4095 | 2.2 | 66.05 |
| EaAU3090 | 2.0 | 69.05 | EaAU4178 | 2.5 | 69.05 |
| EaAU3555 | 0.9 | 61.05 | EaAU4510 | 2.8 | 76.05 |
| EaAU3560 | 1.6 | 51.35 | EaAU4560 | 1.3 | 51.35 |
| EaAU3570 | 0.9 | 56.05 | EaAU6065 | 1.8 | 60.05 |
| EaAU3590 | 2.0 | 69.05 | EaAU6075 | 1.8 | 66.05 |
| EaAU4070 | 1.4 | 61.05 | EaAU6080 | 3.2 | 68.05 |
| EaAU4075 | 2.0 | 62.05 | EaAU6081 | 1.6 | 66.05 |
| EaAU4090 | 1.1 | 63.05 | | | |



EaAR Air Filters

Specially designed for carbureted racing and street rod applications, AMSOIL EaAR Air Filters are composed of advanced nanofiber media for higher dirt-holding capacity and lower pressure drop compared to traditional filter medias. Provide greater air flow and efficiency than other assemblies of this type. EaAR Filters are cleanable and

Call 1-715-399-8324 (Monday-Friday, 8 a.m. - 5 p.m. Central Time) for application information

remain serviceable for long filter life. Cleaning of EaAR Air Filters with a shop vacuum or low pressure shop air is recommended when designated by the restriction gauge or according to operating conditions.

| Stock # | Diameter (in.) | Height (in.) | Description | Wt. Lbs. | Cost |
|----------|----------------|--------------|----------------------------|----------|--------|
| EaAR2102 | 14 | 2 3/4 | Complete Filter Kit | 4.7 | 129.35 |
| EaAR2103 | 14 | 3 5/8 | Complete Filter Kit | 5.0 | 129.35 |
| EaAR2104 | 14 | 4 11/16 | Complete Filter Kit | 5.3 | 129.35 |
| EaAR2105 | 14 | 5 11/16 | Complete Filter Kit | 5.6 | 136.05 |
| EaAR2106 | 14 | 6 7/8 | Complete Filter Kit | 5.9 | 136.05 |
| EaAR2140 | 14 | N/A | Replacement Base for Kit | 1.0 | 51.35 |
| EaAR2141 | 14 | 7/8 | Replacement Lid for Kit | 1.7 | 69.35 |
| EaAR2142 | 14 | 2 | Replacement Filter for Kit | 2.0 | 51.35 |
| EaAR2143 | 14 | 3 | Replacement Filter for Kit | 2.0 | 51.35 |
| EaAR2144 | 14 | 4 | Replacement Filter for Kit | 2.6 | 51.35 |
| EaAR2145 | 14 | 5 | Replacement Filter for Kit | 2.9 | 54.05 |
| EaAR2146 | 14 | 6 | Replacement Filter for Kit | 3.2 | 54.05 |

Ea Pre-Filters

Constructed of woven mesh and designed for racing and off-road applications, AMSOIL Ea Pre-Filters fit over the top of AMSOIL EaAR and EaAU Filters, preventing large particles from sticking to them and blocking the flow of air. Easily removed and shaken free of debris in seconds. Ea Pre-Filters are cleanable and remain serviceable for up to one year.



| Stock# | Wt. Lbs. | Cost | Stock# | Wt. Lbs. | Cost |
|--------|----------|-------|--------|----------|-------|
| EaPF01 | 0.1 | 18.60 | EaPF14 | 0.1 | 25.25 |
| EaPF02 | 0.1 | 26.55 | EaPF15 | 0.1 | 21.25 |
| EaPF03 | 0.1 | 18.60 | EaPF16 | 0.1 | 21.25 |
| EaPF04 | 0.1 | 26.55 | EaPF17 | 0.1 | 21.25 |
| EaPF05 | 0.1 | 18.60 | EaPF18 | 0.1 | 21.25 |
| EaPF06 | 0.1 | 26.55 | EaPF19 | 0.1 | 21.25 |
| EaPF07 | 0.1 | 18.60 | EaPF20 | 0.1 | 25.25 |
| EaPF08 | 0.1 | 26.55 | EaPF21 | 0.1 | 21.25 |
| EaPF09 | 0.1 | 26.55 | EaPF22 | 0.1 | 18.60 |
| EaPF10 | 0.1 | 26.55 | EaPF24 | 0.1 | 21.25 |
| EaPF11 | 0.1 | 21.25 | EaPF25 | 0.1 | 21.25 |
| EaPF12 | 0.1 | 25.25 | EaPF26 | 0.1 | 18.60 |
| EaPF13 | 0.1 | 27.90 | EaPF27 | 0.1 | 13.25 |

Call 1-715-399-8324 (Monday-Friday, 8 a.m. - 5 p.m. Central Time) for application information.

EaAB Crankcase Breather Air Filters

Advanced nanofiber media provides excellent oil vapor control, increased efficiency and superior engine performance in street rod and racing applications. Designed primarily for installation on valve covers used in high-performance and racing applications, but also compatible with engines, transmissions and oil tanks. EaAB Filters are cleanable and remain serviceable for long filter life.

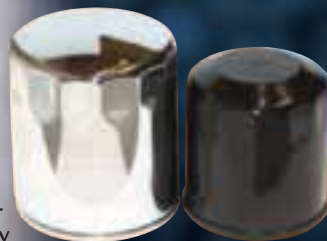


| Stock # | Flange | | Height | Wt. | |
|----------|----------------|----------------|--------|------|-------|
| | Inner Diameter | Outer Diameter | | Lbs. | Cost |
| EaAB1330 | 0.5" | 2.0" | 1.5" | 1.0 | 23.90 |
| EaAB1370 | 1.0" | 2.0" | 1.5" | 1.0 | 23.90 |
| EaAB1491 | 1.25" | 3.0" | 1.75" | 1.0 | 23.90 |
| EaAB1511 | 1.0" | 3.0" | 2.5" | 1.0 | 23.90 |
| EaAB1513 | 1.375" | 3.0" | 2.5" | 1.0 | 23.90 |
| EaAB1514 | 1.5" | 3.0" | 2.5" | 1.0 | 23.90 |
| EaAB2480 | 0.5625" | 1.375" | 1.125" | 1.0 | 23.90 |

Call 1-715-399-8324 (Monday-Friday, 8 a.m. - 5 p.m. Central Time) for application information.

Ea Motorcycle Oil Filters

AMSOIL Ea Motorcycle Oil Filters feature full synthetic nanofiber technology, providing superior protection for motorcycles, ATVs and four-stroke personal watercraft, snowmobiles and outboard motors. Ea Motorcycle Oil Filters last longer, stop smaller dirt particles and offer less restriction, extending equipment and filter life and improving performance. Ea Motorcycle Oil Filters are fluted for easy removal from motorcycles. Available in black or chrome.



| Stock# | Wt. Lbs. | Cost | Stock# | Wt. Lbs. | Cost |
|----------|----------|-------|----------|----------|-------|
| EAOM102 | 0.8 | 10.90 | EaOM133 | 1.0 | 14.80 |
| EaOM103 | 0.6 | 14.80 | EaOM133C | 1.0 | 17.00 |
| EaOM103C | 0.6 | 17.00 | EaOM134 | 0.9 | 13.45 |
| EaOM109 | 0.6 | 15.35 | EaOM134C | 0.9 | 15.10 |
| EaOM109C | 0.6 | 17.65 | EaOM135 | 0.9 | 12.50 |
| EaOM122 | 0.8 | 15.35 | EaOM135C | 0.9 | 15.10 |
| EaOM122C | 0.8 | 17.00 | EaOM136C | 0.9 | 13.80 |
| EaOM132 | 0.7 | 13.45 | EaOM137C | 1.0 | 17.00 |
| EaOM132C | 0.7 | 15.10 | EaOM138C | 0.7 | 15.10 |

Call 1-800-956-5695 (Monday-Friday, 8 a.m. - 5 p.m. Central Time) for application information or order the AMSOIL Power Sports Application Guide (G2135, \$2.25).

"C" designates that the filter is chrome.

Ea Motorcycle Air Filters

AMSOIL Ea Motorcycle Air Filters replace Harley Davidson OEM and S&S filters, incorporating nanofiber technology that offers superior efficiency, air flow and capacity for extended equipment and filter life and enhanced performance. Ea Motorcycle Air Filters are cleanable and remain serviceable for up to four years, saving money on filter costs. Cleaning of Ea Motorcycle Filters with a shop vacuum or low pressure shop air is recommended every year or according to operating conditions.

| Stock# | Wt. Lbs. | Cost | Stock# | Wt. Lbs. | Cost |
|--------|----------|-------|-----------|----------|-------|
| EaAM22 | 1.0 | 38.70 | EaAM33096 | 1.1 | 60.35 |
| EaAM23 | 1.0 | 37.35 | EaAM33104 | 2.0 | 72.95 |
| EaAM24 | 0.4 | 49.00 | EaAM33196 | 1.1 | 62.70 |
| EaAM25 | 1.5 | 67.95 | EaAM43701 | 1.3 | 50.00 |
| EaAM26 | 1.4 | 84.30 | EaAM46199 | 1.4 | 76.00 |
| EaAM27 | 0.8 | 74.35 | EaAM46299 | 1.4 | 74.30 |

Call 1-800-956-5695 (Monday-Friday, 8 a.m. - 5 p.m. Central Time) for application information or order the AMSOIL Power Sports Application Guide (G2135, \$2.25).

Twin Air Filters (FOR DIRT BIKES AND ATVS)

AMSOIL offers premium Twin Air Filters for dirt bike and ATV applications. Twin Air Filters are constructed of two layers of open-pore foam to provide maximum filtration and superior air flow. Exclusively formulated adhesive withstands repeated cleanings. Wash filters and reapply filter oil for years of trouble-free miles.

More Air Flow Traps More Dirt Improves Performance

Twin Air Liquid Power Filter Oil

Starts thin for a deep, even penetration, then dries to an even coating. This high-tack shield traps dirt, grit and dust. Available in spray or liquid form.

| Stock# | Pkg./Size | Wt. Lbs. | Cost |
|---------|-------------------------|----------|-------|
| 159015 | (1) Liter | 2.0 | 19.95 |
| 159016M | (1) 500-ml Spray Bottle | 2.0 | 19.95 |

Twin Air BIO Liquid Power Filter Oil

Biodegradable air filter oil is the first biodegradable air filter oil that works in all riding conditions. Prevents dirt, dust and water from entering carburetors. Its alcohol base allows easy, even penetration, then dissipates quickly to form a super-sticky, dirt-grabbing shield. Available in spray or liquid form.

| Stock# | Pkg./Size | Wt. Lbs. | Cost |
|---------|-------------------------|----------|-------|
| 159017 | (1) Liter | 2.0 | 22.95 |
| 159018M | (1) 500-ml Spray Bottle | 2.0 | 19.95 |



Twin Air Liquid Dirt Remover

Formulated to quickly cut through Liquid Power, loosen dirt and flush filters clean. Will not harden or damage filter foam. Available in spray or liquid form.

| Stock# | Pkg./Size | Wt. Lbs. | Cost |
|--------|-------------------------|----------|-------|
| 159002 | (1) 4-liter Bottle | 8.0 | 29.95 |
| 159006 | (1) 500-ml Spray Bottle | 2.0 | 19.95 |



Twin Air BIO Dirt Remover

Biodegradable air filter cleaner can be used with a washing machine or when washing by hand in a bucket. Granular water-soluble cleaner can go right down the drain without clogging or harming the environment.

| Stock# | Pkg./Size | Wt. Lbs. | Cost |
|--------|-------------------|----------|-------|
| 159004 | (1) 800-ml Bottle | 2.0 | 19.95 |



Twin Air Contact Cleaner

Designed to clean the air box and surrounding areas. Quickly removes excess dirt and grime.

| Stock# | Pkg./Size | Wt. Lbs. | Cost |
|--------|-------------------------|----------|-------|
| 159003 | (1) 500-ml Spray Bottle | 2.0 | 12.95 |



Twin Air System

Comes with everything needed to clean and care for Twin Air Filters, including cleaning tub, oiling tub, Liquid Dirt Remover (4 liters), Liquid Power Filter Oil (1 liter), Contact Cleaner (500 ml) and rubber gloves. Twin Air BIO System includes cleaning tub, oiling tub, BIO Dirt Remover (800 ml), BIO Liquid Power Filter Oil (1 liter), Contact Cleaner (500 ml) and rubber gloves.



| Stock# | Pkg./Size | Wt. Lbs. | Cost |
|-----------|-------------|----------|-------|
| 159000 | (1) Kit | 16.0 | 89.95 |
| 159000BIO | (1) BIO Kit | 12.0 | 89.95 |

WIX Filters

AMSOIL also offers premium WIX filters to complement the AMSOIL filter line and help meet virtually every automotive and light truck need.

OIL FILTERS • AIR FILTERS • FUEL FILTERS RACING FILTERS • TRANSMISSION FILTERS

AMSOIL can find your vehicle's filter number or cross reference filters for your vehicle from the manufacturer part number of the filters you are currently using. Call 1-800-956-5695 (Monday - Friday, 8 a.m. - 5 p.m. Central Time) with vehicle or filter information when ordering. You may also contact the AMSOIL Dealer listed on the back of your catalog (if one is listed), or order the Filter Applications and Cross Reference Guide (G3000, \$7.60). For convenience, complete the form on the bottom of page 31.



AMS-Oiler™ Pre-Charger

Puts an end to dry-engine starting. Motor oil is injected directly on bearings and other wear sensitive surfaces upon turning the ignition key. Performs reliably in any personal, commercial or industrial application.

The AMK01 is designed for use with the AMSOIL BMK13 or 15 through 18 Dual Remote systems.

The AMK02 can be used with any engine application and mounts at any angle.

| Stock# | Pkg./Size | Wt.Lbs. | Cost |
|--------|---------------------------------|---------|--------|
| AMK01 | (1) AMS-Oiler (By-Pass mounted) | 4.3 | 344.00 |
| AMK02 | (1) AMS-Oiler (stand alone) | 6.2 | 406.00 |

Ford 6.0L Diesel Fuel Filter

The FFK60 Fuel Filter is designed for the Ford 6.0L Diesel PowerStroke™ engine. Incorporates both a primary and secondary filter for maximum fuel cleanliness.

FFK60 FUEL FILTER

Ford 6.0L Diesel PowerStroke™ Applications

| Stock# | Pkg./Size | Wt.Lbs. | Cost |
|--------|-----------------|---------|-------|
| FFK60 | (1) Fuel Filter | 2.0 | 60.00 |

Ford 6.0L Diesel Oil Filter

The EaO88 is the world's first oil filter cartridge for diesel applications using advanced submicron full synthetic media. Designed for 2003-2006 Ford 6.0L diesel engines, the EaO88 provides an efficiency of 98.7% at 16 microns, significantly higher than the OEM filter.

EaO88 OIL FILTER

Ford 6.0L Diesel PowerStroke™ Applications

| Stock# | Pkg./Size | Wt.Lbs. | Cost |
|--------|----------------|---------|-------|
| EaO88 | (1) Oil Filter | 0.5 | 31.00 |



**World's first
oil filter cartridge for
diesel applications using
advanced submicron full
synthetic media**

PowerCore® Air Filters

The rugged structure of PowerCore® filters features an innovative, layered, fluted filter media which allows air to enter an open flute while forcing it out an adjacent flute, allowing only clean air into the engine. Dirty air is effectively filtered and cleaned in only one pass through the media. Ten times more efficient than standard filter designs.

PowerCore® is a registered trademark of Donaldson Company Inc. These filters are manufactured by Donaldson for AMSOIL.

Ford 6.0L Diesel PowerStroke™ Air Filter

| Stock# | Pkg./Size | Wt.Lbs. | Cost |
|---------|---------------------------|---------|-------|
| P603577 | (1) PowerCore® Air Filter | 4.8 | 74.80 |

Hummer H2 6.0L Vortec™ Air Filter

| Stock# | Pkg./Size | Wt.Lbs. | Cost |
|--------|---------------------------|---------|-------|
| PCFH2 | (1) PowerCore® Air Filter | 2.7 | 69.95 |



Donaldson 7.3L PowerStroke™ Diesel Air Induction System

Replaces the present air intake system and provides unmatched performance and filtering efficiency on 1999 to 2003 model year Ford F-250 to F-550 Super Duty trucks and SUVs with 7.3L PowerStroke™ Diesel engines.

Donaldson 7.3L PowerStroke™ Diesel Air Induction System

| Stock# | Pkg./Size | Wt.Lbs. | Cost |
|--------|--------------------------|---------|--------|
| PCIS73 | (1) Air Induction System | 14.0 | 300.00 |



Donaldson Heavy-Duty Filters

AMSOIL offers premium Donaldson oil, air, fuel, coolant and hydraulic filters for diesel and heavy duty applications. Donaldson Endurance™ Air Filters with exclusive nanofiber technology and Donaldson Endurance Oil Filters with premium advanced synthetic media technology deliver significantly higher efficiency and capacity than conventional filters, extending engine and filter life. P-Series oil and air filters offer premium filtration at a competitive price, featuring advanced media designed to trap wear-causing contaminants and extend equipment life.



AMSOIL can find your vehicle's filter number or cross reference filters for your vehicle from the manufacturer part number of the filters you are currently using. Call 1-800-956-5695 (Monday – Friday, 8 a.m. – 5 p.m. Central Time) with vehicle or filter information when ordering. You may also contact the AMSOIL Dealer listed on the back of your catalog (if one is listed), or order the Filter Applications and Cross Reference Guide (G3000, \$7.60). For convenience, complete the form on the bottom of page 31.



EaBP By-Pass Filters

Engine wear is caused by dirt and agglomerated soot particles larger than 5 microns. AMSOIL EaBP Filters are high efficiency by-pass filters that also remove soot. The two stage pleated and layered cellulose/full synthetic media has an efficiency rating of 98.7 percent at two microns. These filters remove 39 percent of soot contaminants less than one micron. At normal operating RPMs the EaBP Filter will filter all of the oil in a typical five quart sump in less than 10 minutes.

Some mechanical ability required for installation. Yellow mounting stand for demonstration purposes only; not included.

*SPIN-ON BY-PASS OIL FILTRATION KIT

| Stock# | Pkg./Size | Wt.Lbs | Cost |
|--------|-----------------------------|--------|--------|
| BMK11 | (1) Universal Mounting Kit | 3.8 | 174.00 |
| BMK13 | (1) Reversible Remote Mount | 8.3 | 201.00 |

*The BMK11 kit includes a filter mount, 8' hose and mounting hardware. By-pass filter elements sold separately below.

*The BMK13 kit includes a double filter mount, 8' hose, engine adapters and mounting hardware. Filter elements sold separately.

BY-PASS OIL FILTER REPLACEMENT ELEMENT

| Stock# | Pkg./Size | Wt.Lbs | Cost |
|---------|-------------------|--------|-------|
| EaBP90 | (1) Length 5.78" | 2.3 | 36.65 |
| EaBP100 | (1) Length 7.25" | 2.7 | 38.35 |
| EaBP110 | (1) Length 10.44" | 3.5 | 44.40 |

*OIL SENDING UNIT ADAPTERS

| Stock# | Pkg./Size | Wt.Lbs | Cost |
|--------|--|--------|-------|
| BP44 | (1) Adapter Kit (fits most Japanese cars) | .2 | 14.75 |
| BP45 | (1) Adapter Kit (fits most European cars) | .2 | 14.75 |

*Call the AMSOIL Technical Services Department at (715) 399-8324 with questions or for installation assistance.

Dual Remote Oil Filtration Kit

(Without filter elements—2 required). Versatile system combines full-flow and by-pass oil filtration on a single, easy-to-install mount. All installation parts are included.



Marine Dual Remote Oil Filtration Kit

High efficiency oil filtration system for marine applications combines full-flow and by-pass oil filters on an easily accessible remote mount. Adapter kits allow system to be used with a wide variety of marine engines.

MARINE DUAL REMOTE OIL FILTRATION KIT

| Stock# | Pkg./Size | Wt.Lbs. | Cost |
|--------|---------------------------------|---------|--------|
| BMK18 | (1) Marine Mounting Kit | 13.0 | 460.00 |
| BK195 | (1) 3/4 - 16" thread adapter | 0.1 | 49.40 |
| BK196 | (1) 13/16 - 16" thread adapter | 0.1 | 49.40 |
| BK197 | (1) 18 mm - 1.5" thread adapter | 0.1 | 49.40 |
| BK198 | (1) 20 mm - 1.5" thread adapter | 0.1 | 49.40 |

* The BMK18 kit includes a dual filter mount, mounting hardware, hoses, hose fittings and component parts. Filter elements and adapter kits sold separately.

Call the AMSOIL Technical Services Department at (715) 399-8324 or order a G2051 Marine Dual Remote Cross Reference Guide (\$0.30) to determine the appropriate adapter kit for your application.



Large Filter Wrench

Fits filters from 3 1/8" to 3 7/8" in diameter. Large range enables wrench to fit most standard size filters. Steel jaws grip filter without slipping. Works from the top of the filter, making it ideal for tight spots. Use with 3/8" drive.

| Stock# | Wt. Lbs. | Cost |
|--------|----------|-------|
| G2197 | 1.3 | 12.80 |



Small Filter Wrench

Fits filters from 2 1/2" to 3 1/8" in diameter. Extra large range enables wrench to fit most import car filters, as well as common 3" domestic car filters. Steel jaws grip filter without slipping. Works in tight spots from the front of the filter using 3/8" drive.

| Stock# | Wt. Lbs. | Cost |
|--------|----------|-------|
| G2198 | 0.8 | 11.10 |



Strap Filter Wrench

Wide band tightens while you turn. Offers the widest range than any other wrench. For all filters. Range: Up to 6" (152 mm).

| Stock# | Wt. Lbs. | Cost |
|--------|----------|------|
| G2199 | 0.5 | 4.35 |



Mechanics Lube Kit

Contains the most critical tools for complete lube service of most makes and models. Includes tools for foreign and domestic servicing. Each kit contains the following:

- 13 Cap-type wrenches
- 2 Hex cap socket wrenches
- 2 Swivel-type filter wrenches
- 1 Strap wrench
- 1 Small spider wrench
- 1 Adjustable plier-type wrench
- 6 Drain plug wrenches
- 2 Metric square plug wrenches
- 3 Metric hex drain plug wrenches
- 1 12 point x 16 mm drain plug wrench
- 1 Low profile T45 Torx oil filter tool

| Stock# | Wt. Lbs. | Cost |
|--------|----------|--------|
| G2200 | 20.0 | 167.00 |



Filter Cap Wrench

Designed for Harley-Davidson and BMW motorcycle oil filter applications and can be used to install and remove the following AMSOIL Ea Motorcycle Oil Filters: EaOM122/122C, EaOM132/132C, EaOM133/133C, EaOM134/134C, EaOM135/135C and EaOM136C.

| Stock# | Wt. Lbs. | Cost |
|--------|----------|------|
| G2309 | 0.8 | 2.15 |



NEW!

Injen/AMSOIL Diesel Air Intake Systems

Effectively maximize power by increasing air flow and minimizing air resistance. Capture cooler air from outside the engine compartment, improving fuel combustion and performance. Manufactured with aerospace alloy T6 aluminum, stainless steel clamps and tig-welded ports and brackets. Dyno-tuned for peak performance. Direct bolt-in applications for quick and easy installation. Premium AMSOIL Ea Air Filters ensure superior protection, efficiency, air flow and maximum filter life.

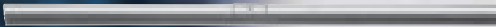
| Stock# | Pkg./Size | Wt.Lbs. | Cost |
|---------|--|---------|--------|
| PF7075P | 2005-07 Chevy/GMC 6.6L Duramax Kit | 10.5 | 644.00 |
| PF8075P | 2003-07 Dodge Ram 2500, 3500 5.9L Cummins Kit | 10.5 | 639.00 |
| PF9050P | 2003-07 Ford 6.0L PowerStroke F250, F350, F450 Kit | 10.5 | 619.00 |

NEW!

TRICO Heavy Duty Wiper Blades

Available for virtually all heavy-duty applications, including heavy-duty trucks, buses and recreational vehicles. Feature durable metal construction and heavy-duty natural rubber wiping elements for quality performance and durability under demanding conditions. Quick and simple installation. Include adaptors that allow blades to easily fit on competitors' wiper arms.

61 Series



63 Series



64 Series



65 Series



66 Series



67 Series



68 Series



TRICO Wiper Blades

TRICO Exact Fit

Pre-assembled to precisely match the vehicle's arm type. Easily install in only seconds. All-metal blade construction provides superior strength and durability. Provide better-than-OEM performance and longevity and cover nearly 99 percent of all auto/light truck applications.

TRICO NeoForm

TRICO's highest-performing blades. Deliver constant, even pressure across the entire length of the wiper for a smoother, more consistent wipe. Attractive European aerofoil design keeps the blade on the windshield, even in high wind or vehicle speeds. Fit most popular vehicles and come with a blade cleaner cloth packet.

TRICO Oktane

Feature an all-metal blade frame with built-in aerodynamic spoiler. Pre-attached universal adapter fits sport compact and other vehicles in the auto/light truck and tuner markets. Low profile reduces wind lift at higher speeds (up to 115 mph). Provide quiet operation with less chatter. Sleek look complements the aesthetics of today's modern vehicles. Available in six colors, including carbon fiber, chrome, white, red, blue and yellow.

TRICO Winter

Feature a protective rubber boot to prevent snow and ice from clogging the blade, providing a clean wipe and enhanced driving visibility. Riveted design for extra durability. Extra-thick, rugged OEM metal superstructure provides superior strength, and the pre-attached universal adapter fits 95 percent of vehicles.

TRICO Classic

Designed for vintage cars. Feature silver finish to resemble OEM blades on many classic American cars manufactured during the 1940s, '50s and '60s. Precision cut rubber wiping element provides a clean wipe every time. AMSOIL offers five models from the Classic blade line.

Exact Fit



NEOFORM BEAM BLADE



Winter



Classic



Fill in your vehicle information. For application and pricing information, call 1-800-956-5695 (Monday - Friday, 8 a.m. - 5 p.m. Central Time) or contact the AMSOIL Dealer listed on the back of your catalog (if one is listed).

Make _____ Year _____ Full Model _____

Your Trico wipers are _____



Engine Flush

Cleans the crankcase, cylinder walls, pistons and rings for maximum efficiency, protection and performance. Preps engines for installation of AMSOIL Synthetic Motor Oil. Flushing requires one bottle per vehicle (4 to 6 qt. oil capacity).

Use Engine Flush before changing your oil.

| Stock# | Unit of Measure | Pkg./Size | Wt.Lbs. | Cost |
|--------|-----------------|---------------------|---------|--------|
| AEFCN | EA | (1) 16-oz. Bottle | 1.1 | 5.70 |
| AEFCN | CA | (12) 16-oz. Bottles | 13.7 | 67.20 |
| AEF05 | EA | (1) 5-gal. Pail | 45.0 | 120.00 |



Power Foam

Improves starting and performance. Cleans dirty intake systems and spark plugs and frees sticky valves. Also removes gum, varnish and carbon deposits from engine exterior surfaces.

| Stock# | Unit of Measure | Pkg./Size | Wt.Lbs. | Cost |
|--------|-----------------|------------------------|---------|-------|
| APFSC | EA | (1) 18-oz. Spray Can | 1.5 | 5.90 |
| APFSC | CA | (12) 18-oz. Spray Cans | 18.0 | 69.60 |



Heavy Duty Metal Protector

A heavy-duty spray lubricant fortified with special rust and corrosion inhibitors. It penetrates and adheres to metal surfaces, leaving a dry, long lasting wax-like protective coating. Dries completely and doesn't attract dust. Ideal for motorcycle, bicycle and ATV chains. Also works well as an undercoat, preventing rust and eliminating squeaks.

| Stock# | Unit of Measure | Pkg./Size | Wt.Lbs. | Cost |
|--------|-----------------|------------------------|---------|-------|
| AMHSC | EA | (1) 16-oz. Spray Can | 1.4 | 7.00 |
| AMHSC | CA | (12) 16-oz. Spray Cans | 16.8 | 82.80 |



Metal Protector

Disperses water and protects metal surfaces from rust and corrosion. Penetrates existing rust build-up and loosens bolts. Also dries wet electrical systems. A must for any home or shop. Keep a can in your vehicle too.

| Stock# | Unit of Measure | Pkg./Size | Wt.Lbs. | Cost |
|--------|-----------------|--------------------------|---------|-------|
| AMPSC | EA | (1) 8.75-oz. Spray Can | .8 | 4.70 |
| AMPSC | CA | (12) 8.75-oz. Spray Cans | 10.0 | 55.20 |

Silicone Spray

Perfect for lubricating nonmetallic surfaces that come into contact with metal, nylon, cardboard, fiberglass, wood or plastic surfaces. Works great as a suede protectant. Use anywhere a light-duty or silicone lubricant is required. Special nonstain formula. USDA H-1 rated.

| Stock# | Unit of Measure | Pkg./Size | Wt. Lbs. | Cost |
|--------|-----------------|-----------------------|----------|-------|
| ALSSC | EA | (1) 10-oz. Spray Can | .9 | 6.95 |
| ALSSC | CA | (6) 10-oz. Spray Cans | 5.6 | 41.10 |

BriteSide™ Rain Clear Windshield Protectant

Maximize visibility in all kinds of weather. Rain, snow and sleet are repelled off glass. Wind action of driving forces moisture off the windshield, giving a clear view of the road ahead.

| Stock# | Unit of Measure | Pkg./Size | Wt. Lbs. | Cost |
|--------|-----------------|-------------------|----------|-------|
| ARSBA | EA | (1) 4-oz. Bottle | .3 | 4.90 |
| ARSBA | CA | (4) 4-oz. Bottles | 1.2 | 19.20 |

BriteSide™ Miracle Wash Aerosol Spray

A unique dry car wash and polish delivers outstanding performance and quick, easy and economical applications. No water required. Specially formulated surfactants lift dirt and other particles from the surface of your car and hold them in suspension. Miracle Wash then acts as a shield, protecting the surface from abrasion while you wipe the dirt clean. Repels dust and light dirt particles and protects against the sun's ultraviolet rays.

| Stock# | Unit of Measure | Pkg./Size | Wt. Lbs. | Cost |
|--------|-----------------|-----------------------|----------|-------|
| AMWSC | EA | (1) 13-oz. Spray Can | 1 | 9.15 |
| AMWSC | CA | (6) 13-oz. Spray Cans | 6 | 54.30 |

Mothers® Appearance Products

AMSOIL offers premium Mothers automotive and marine appearance products that include everything needed to clean, polish and care for vehicles. For product and pricing information, contact the AMSOIL Dealer listed on the back of your catalog (if one is listed).

**Hundreds
of Household
Uses.**



NGK Spark Plugs and Plug Wire Sets

NGK Iridium IX

Provide unsurpassed performance in auto/light truck and powersports applications. The iridium alloy electrode is extremely durable to heat, corrosion and electrical wear. The fine wire electrode reduces the energy required to create a spark while providing increased ignition efficiency and superior ignitability. The center electrode has an extra anti-fouling mechanism.



NGK V-Power

Offer higher performance in auto/light truck applications than standard plugs. The V-Power electrode lowers ignition system voltage requirements and provides better protection against fouling, greater ignitability and improved performance over conventional spark plugs.



NGK Standard

Provide excellent service for many applications, including auto/light truck, powersports and small engines. Provide reduced fouling, superior heat dissipation and conductivity and excellent performance and durability.



NGK Commercial

Specifically designed for commercial and other small engine applications, including lawn equipment, trimmers, pumps and generators. Their easy starting, anti-fouling design helps deliver longer life in heavy-duty and commercial applications.



NGK Spark Plug Wire Sets

Manufactured with the finest materials and quality construction for excellent noise suppression and superior conductivity. Offer exact OEM fit, form and function.



Fill in your vehicle information. For application and pricing information, call 1-800-956-5695 (Monday - Friday, 8 a.m. - 5 p.m. Central Time) or contact the AMSOIL Dealer listed on the back of your catalog (if one is listed).

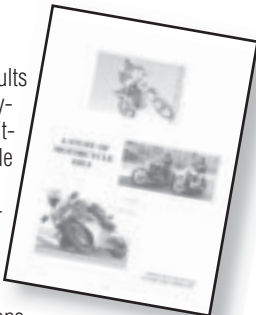
Make _____ Year _____ Full Model _____

Your NGK Plugs are _____ Your NGK Wires are _____

A STUDY OF MOTORCYCLE OILS

Compares the test results of 28 different motorcycle oils in the most critical areas of motorcycle oil performance, including wear protection, shear stability and rust protection, helping consumers make educated decisions regarding which oil to use in their motorcycles.

Stock # Cost
G2156 1.15



POWER SPORTS APPLICATION GUIDE

Lubricant, oil filter and air filter recommendations for motorcycles, ATV's, personal watercraft and outboard motors.

Stock # Cost
G2135 2.25



PRODUCT RECOMMENDATION AND DRAIN INTERVAL CHART

Provides product and drain interval recommendations for AMSOIL motor oils and drivetrain lubricants, as well as filter change recommendations.

Stock # Cost
G2281 0.35



COMPARATIVE MOTOR OIL TESTING BROCHURE

Examines the impressive results of industry testing on AMSOIL Synthetic 10W-30 Motor Oil and 10 competing conventional and synthetic motor oils.

Stock # Cost
G1971 0.90



COMMITMENT TO EXCELLENCE BROCHURE

Highlights the AMSOIL Corporation, its products, history, manufacturing, commitment and exciting future.

Stock # Cost
G393 0.95



PRODUCT SELECTION GUIDE

Lubricant recommendations for domestic and foreign vehicles and components of all kinds.

Stock # Wt. Cost
G50 0.6 lbs. 10.60



A STUDY OF AUTOMOTIVE GEAR LUBES

Compares cost differences and test results of 14 different synthetic and petroleum gear lubes in the most critical areas of gear lube performance, including viscosity, viscosity index, pour point and foaming after oxidation, helping consumers make informed decisions when selecting gear lubes.

Stock # Cost
G2457 1.15



FILTER APPLICATIONS AND CROSS REFERENCE GUIDE

Oil, air, fuel, racing, transmission, coolant and hydraulic filter recommendations for cars, trucks and heavy-duty applications.

Stock # Wt. Cost
G3000 2.4 lbs. 7.60





Shirt Back



Shirt Front



BLACK V-TWIN T-SHIRT

Exciting V-Twin design on left chest and back. Features 50/50 cotton/polyester blend for comfort and less fading. Sizes S-XXXL.

| Stock # | Size | Cost |
|---------|------|-------|
| G2378 | S | 16.50 |
| G2379 | M | 16.50 |
| G2380 | L | 16.50 |
| G2381 | XL | 16.50 |
| G2382 | XXL | 18.50 |
| G2383 | XXX | 19.00 |

HOODED SWEATSHIRT

Suprema™ unisex 80% cotton/20% polyester hooded sweatshirt features drawstring hood with contrast lining and front pouch pocket. Sizes Extra Small-XXXL.

| Stock # | Size | Cost | Stock # | Size | Cost |
|---------|------|-------|---------|------|-------|
| G2481 | XS | 43.75 | G2485 | XL | 43.75 |
| G2482 | S | 43.75 | G2486 | XXL | 46.25 |
| G2483 | M | 43.75 | G2487 | XXX | 50.50 |
| G2484 | L | 43.75 | | | |

THREE SEASON JACKET

Offers a 100% nylon taslan outer shell for water and win resistance, with 100% polyester polar fleece lining. Two front welt pockets with zippers and blue pull tabs, black 1 ¼ inch taffeta band on top outer collar, inside right chest zippered pocket, storm flap and locker loop. Sizes S-XXXL.

| Stock # | Size | Cost |
|---------|------|-------|
| G2165 | S | 50.00 |
| G2166 | M | 50.00 |
| G2167 | L | 50.00 |
| G2168 | XL | 50.00 |
| G2169 | XXL | 52.25 |
| G2170 | XXX | 54.50 |



Jacket Detail





Hat Back

BLADE CAP

Embroidered logos on the front and back. Spandex woven sweatband for the perfect fit. One size fits most.

| Stock # | Cost |
|---------|-------|
| G2132 | 15.85 |



ALBERT J. AMATUZIO: AN AMERICAN SUCCESS STORY DOCUMENTARY

This 86-minute DVD details the life of the man whose focus and determination created the synthetic motor oil industry, the depth of his commitment to quality and the benefits and science behind the technology of synthetic lubrication.

| Stock # | Cost |
|---------|-------|
| G2218 | 11.10 |



MOUSEPAD

This 7½" x 8¼" mousepad replicates the design and colors of the AMSOIL 5W-30 Synthetic Motor Oil quart label.

| Stock # | Cost |
|---------|------|
| G2329 | 4.45 |



EXECUTIVE PEN

This upscale triangular Euro style pen features metallic barrel, large comfortable rubber grip and unique clip design.

| Stock # | Cost |
|---------|------|
| G1837 | 3.90 |



DECALS

| Stock # | | Cost |
|---------|-------------------|----------|
| G1051 | (3" - pkg. of 20) | 2.25 |
| G1058 | (6" - pkg. of 10) | 2.00 |
| G1110 | (13") | .85 ea |
| G1119 | (20½") | 2.35 ea |
| G1123 | (36") | 4.00 ea |
| G1323 | (48") | 12.40 ea |



AMSOIL RACING DECALS

| Stock# | Size | Cost |
|--------|-------------------|-------|
| G1789 | (4" - pkg. of 10) | 4.40 |
| G1800 | (7" - pkg. of 10) | 6.65 |
| G1790 | (12" - pkg. of 5) | 5.00 |
| G1791 | (1 - 20") | 2.60 |
| G1792 | (1 - 36") | 6.50 |
| G1793 | (1 - 48") | 19.35 |

Become an AMSOIL Preferred Customer and have access to the complete line of AMSOIL clothing and promotional items at wholesale prices. Call 1-800-956-5695 (Monday - Friday, 8 a.m. - 5 p.m. Central Time) for more information.

The Company of Firsts

Over 30 Years of Innovation and Leadership



AMSOIL INC.
2206 WINTER STREET
SUPERIOR, WI 54880

WE HONOR



- **First** to develop an API rated 100 percent synthetic motor oil.
- **First** to introduce the concept of “extended drain intervals” with a recommended 25,000-mile/12-month drain interval.
- **First** U.S. company to utilize the NOACK volatility test as a standard of performance excellence.
- **First** to produce synthetic motor oils for diesel engines, racing engines, turbos and marine engines.
- **First** to introduce synthetic oils that legitimately contribute to improving fuel efficiency.
- **First** to manufacture synthetic gear lube for automotive use.
- **First** to manufacture a 100:1 pre-mix synthetic 2-cycle oil.
- **First** to manufacture a synthetic automatic transmission fluid for automotive use.

Referral # _____

*Refer to this referral number to save time
and make ordering easier. Call toll-free at
1-800-956-5695. Credit card orders only. ➔*